

133

STAR TREK™

THE OFFICIAL STARSHIPS COLLECTION



IRINA'S
RACING SHIP

SPECIES: TERRELIAN

IN USE: 2370s

CREW: TWO

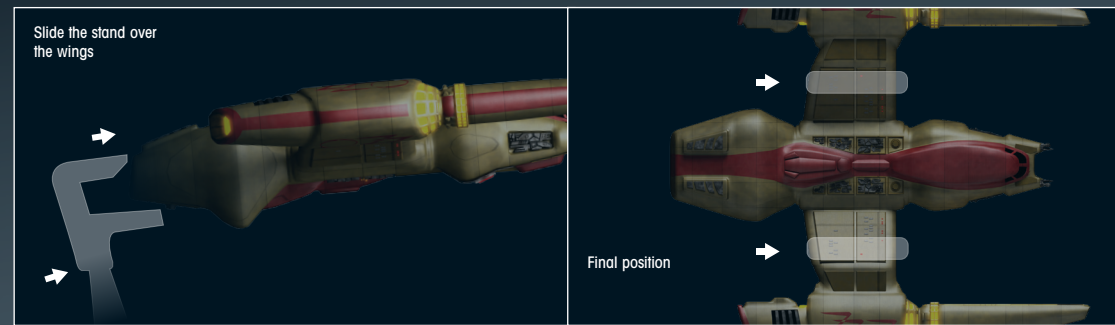
LENGTH: 20 METERS

IRINA'S RACING SHIP

Contents

- P04: IRINA'S RACING SHIP
- P10: DESIGNING THE SHIP
- P12: THE WRITERS ON VOYAGER'S FINAL SEASON
- P18: ON SCREEN

Stand assembly:



IRINA'S RACING SHIP SPECIFICATION



SPECIES:	TERRELLIAN
TYPE:	RACING SHIP
IN OPERATION:	2377
LOCATION:	DELTA QUADRANT
LENGTH:	20 METERS (APPROX.)
CREW:	TWO
PILOT:	IRINA

SHOP ONLINE

There's more to us than you might think!

Order **XL Starships, bonus editions, binders** to safely store your magazines **and much more!**

STAR TREK THE OFFICIAL STARSHIPS COLLECTION

MIRROR UNIVERSE I.S.S. DEFIANT NX-74225

shop.eagleboss.com

EAGLEMOSS COLLECTIONS

Eagleboss Ltd. 2018
1st Floor, Kensington Village, Avonmore Road, W14 8TS, London, UK. All rights reserved.

TM & © 2018 CBS Studios Inc. © 2018 Paramount Pictures Corp. STAR TREK and related marks and logos are trademarks of CBS Studios Inc. All Rights Reserved.

STAR TREK – The Official Starships Collection is published fortnightly.

DON'T MISS AN ISSUE: place a regular order with your magazine retailer.

SUBSCRIBE and receive exclusive free gifts – www.startrek-starships.com Call 0344 493 6091 Post the subscription form included with issues 1 to 5

BACK ISSUES
To order back issues: Order online at www.startrek-starships.com or call 0344 493 6091

UK distributor: COMAG Magazine Marketing

Find us on Facebook
Join us online for competitions, updates and more!

CUSTOMER SERVICES:
www.startrek-starships.com

UK: 0344 493 6091
startrek-ship@eagleboss-service.com

Australia: (03) 9872 4000
bissett@bissettmags.com.au

New Zealand: (09) 308 2871
Fax: (09) 302 7661
subs@ndc.co.nz

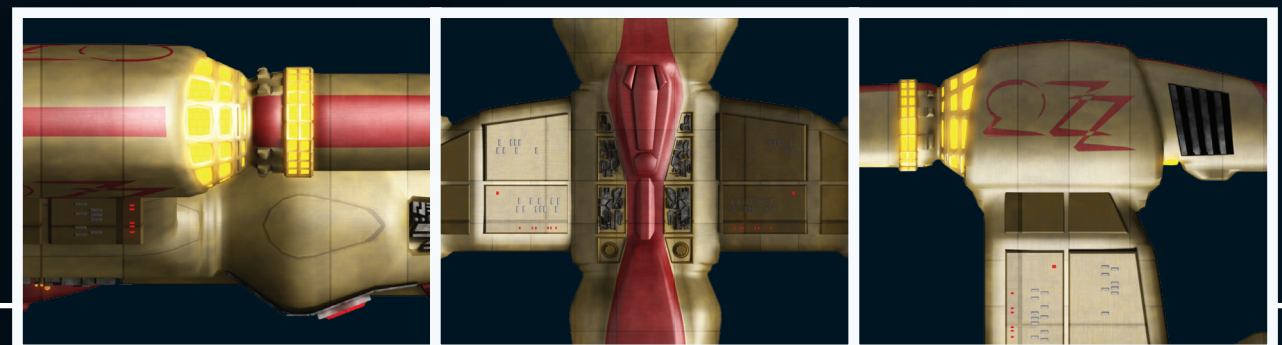
South Africa: (011) 265 4307
service@jacklin.co.za

Malaysia: (03) 8020 7112
sales@allscript.com

Singapore: (65) 6287 7090
sales@allscript.com

OVERSEAS BACK ISSUES
Place your order with your local magazine retailer.

Recommended age 14+.
Warning! Collectable models.
Not designed or intended for play by children.
Do not dispose of in domestic waste.



▼ Tom Paris was awed by the beauty of Irina's racing ship, as it looked fast even when standing still. Although it was capable of warp, Irina's ship was really built for flying at maximum impulse speeds among systems filled with obstacles when a skilful pilot could maximize its agility.

Irina was a Terrellian from a small trinary system in the Delta Quadrant who piloted a specially designed ship to meet the guidelines for the Antarian Trans-stellar Rally. The race was organized in 2377 to commemorate the first anniversary of a precarious treaty signed by the Delta Quadrant races of the Aksani, the Antarians, the Chessu, and the Terellians after nearly a century of conflict.

It was designed to be the ultimate test of ship design and piloting skill, but also fulfilled the far more important diplomatic function of enabling peaceful competition between recent enemies.

Irina's ship was a two-person craft, with a streamlined main hull connected to twin oversized drive nacelles by upwardly angled port and starboard support struts. A striking metallic red stripe ran along the middle section of the hull and on the top of the nacelles, giving it an aggressive, go-faster appearance. Lt. Tom Paris noted that its warp system was rudimentary, but that the impulse drive was "a real beauty." This reflected the fact that it had been designed for the sublight Antarian Trans-stellar Rally, in which the use of warp drives was prohibited.

ADVANCED IMPULSE DRIVE

The impulse drive on Irina's vessel therefore relied on more conventional means to generate thrust, employing deuterium fuel. This restricted the ship to only about one-quarter light speed, or roughly 270 million kilometers per hour, but it meant that pilot skill played an important part in its operation, compared to the uninvolved straight-line piloting of warp flight. To Irina, this meant that her ship was about real flying in which pilot skill played a huge part in making it fast. In addition, as Irina's ship was set up primarily for sublight speeds, it was more maneuverable than the *Delta Flyer*, which had been designed to balance the requirements for both impulse and warp travel.

Irina's ship was equipped with several systems compatible with Starfleet technology, including similar EPS power relays and impulse manifold systems. However, some of the tools used to make repairs, such as a veridium injector, were unfamiliar

IRINA'S RACING SHIP

Built for speed and maneuverability, the Terrellian ship piloted by Irina took part in a demanding interstellar rally.



DATA FEED

Seen as a symbolic event at the end of a long war between four species, the Antarian Trans-stellar Rally featured 12 vessels competing against each other over a 2.3 billion kilometer course.

◀ Tom Paris and Harry Kim were testing the newly rebuilt *Delta Flyer* when they first encountered Irina's ship. She challenged them to a race through a dense asteroid field, and Paris was only too happy to accept the challenge. After the *Delta Flyer* won, Irina invited Paris and Kim to take part in the Antarian Trans-stellar Rally.



▲ Irina's ship was brought back to *Voyager*, where it underwent repairs. It was during this time that Irina supplied the *Delta Flyer* with a fuel converter that was rigged to explode.

► Vessels from various species lined the course, allowing spectators to view the race as the competitors jostled for position between the light buoys. At one point, Irina's ship was leading the race.



▲ The racing was fiercely fought, and at one point coming out of the hazardous Möbius Inversion wormhole Irina's ship was level-pegging with the *Delta Flyer* and an Imhotep racing shuttle flown by Assan. It was shortly after this that Irina claimed to have problems with her ship, so that she would be nowhere near the *Delta Flyer* when it exploded.

▲ Decked out in a gold and red livery, with a racing stripe right down the middle, Irina's ship was not hiding the fact that it was built for speed. It was also incredibly nimble, and could take on dangerous obstacles and anomalies such as a Möbius Inversion wormhole at breakneck velocities.

to the Starfleet crew. Irina's vessel also had shields, but these appeared to take only limited damage before the shield generator overloaded.

Irina and her sleek vessel first came to the attention of the crew of the *U.S.S. Voyager* NCC-74656 when she challenged Lieutenant Tom Paris and Ensign Harry Kim – who were piloting the newly rebuilt *Delta Flyer* – to a race through an asteroid field. The race was closely fought, not least because Irina had a head start, but by employing their new impulse thrusters Paris and Kim succeeded in beating her ship “by a nose.” During the contest, however, Irina clipped an asteroid, which caused her starboard nacelle to vent toxic nyocene gas into the cabin, and she had to be transported to safety aboard the *Delta Flyer*.

Paris and Kim towed Irina's ship back to *Voyager*,

and while they were making repairs Irina informed them of the upcoming rally. They were very keen to join the race, and Captain Janeway gave them permission to enter the *Delta Flyer*, although in the end B'Elanna Torres took Kim's position as copilot.

TOUGH COURSE

The total length of the course was 2.3 billion kilometers, split into three separate segments and run over two days, and it included several naturally occurring obstacles, ranging from dwarf star clusters to K-class anomalies.

The first leg of segment one moved through the Darla System, passing a gas giant whose gravity could be used to boost speed. A Möbius Inversion covered the entire last third of this section, and was described by Tom Paris as “a little wormhole with a

big attitude.” The final segment included a red giant that required a fast course change of 86 degrees after exiting it, and then passing between twin pulsars before the finishing line.

Irina's vessel certainly had the potential to win the rally, as it kept with the front runners and even led the race at one point, but she did not want to win. Instead, it was her intention to disrupt the peace by causing an explosion at the finish line.

Irina had rigged the *Delta Flyer's* fuel converter to detonate, which would have killed hundreds of spectators. Fortunately, Kim discovered her plan and warned Paris, who ejected the *Delta Flyer's* warp core well away from everyone. The race was won by Assan, a member of the Imhotep species, and, despite Irina's best efforts, the contest was successful in bringing together former enemies.

DATA FEED

Irina was a Terrellian, who was against the peace treaty her species had signed with various other alien races. She planned to disrupt the recent truce by causing an explosion at the finish of the Antarian Trans-stellar Rally. She had given the *Delta Flyer* a fuel converter that was rigged to leak veridium isotopes near the warp core, which would cause it to breach. She hoped the explosion would cause hundreds of deaths and lead to a reopening of hostilities between the various factions.



SHIP INTERIOR

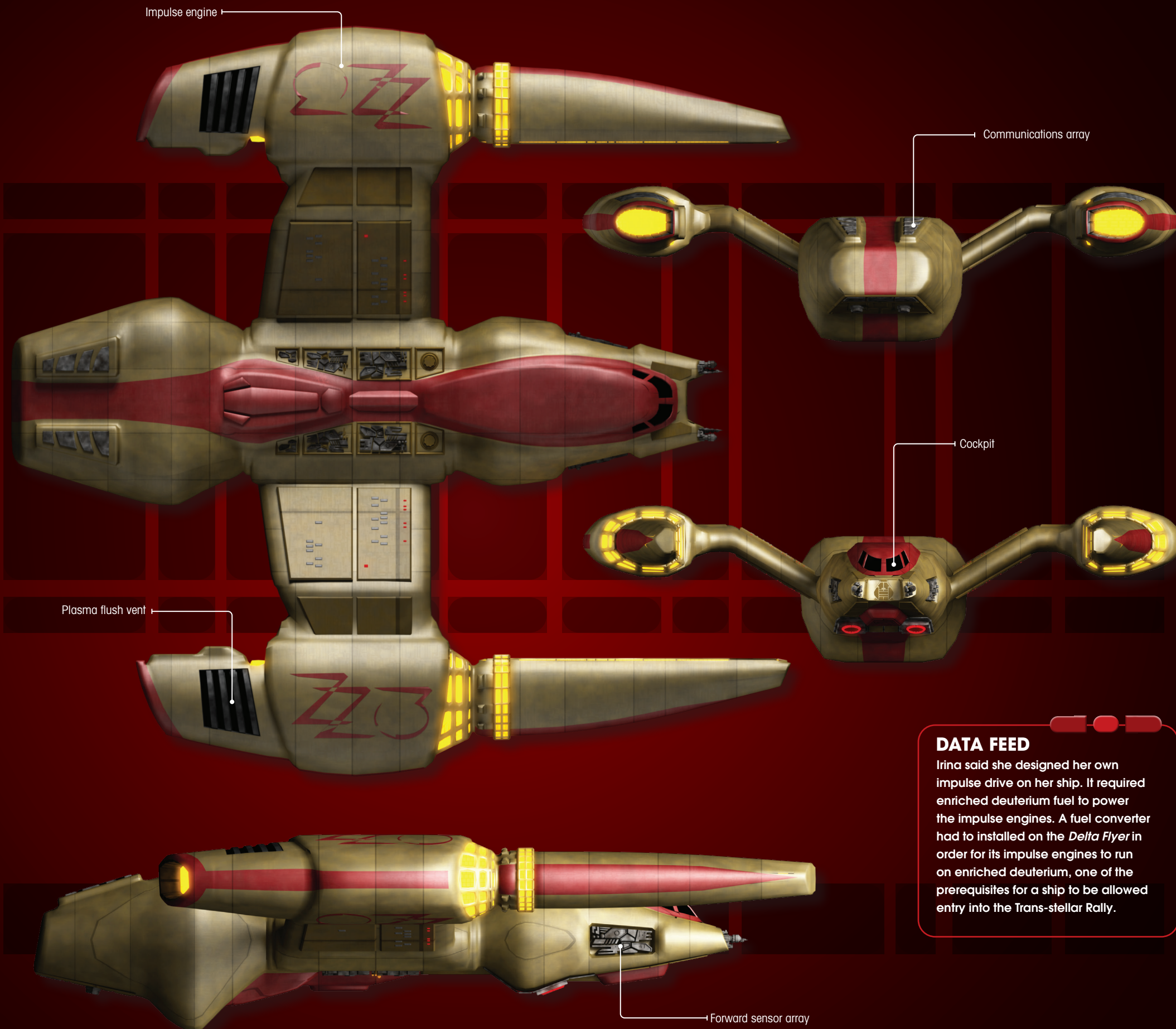
The interior of Irina's vessel was somewhat spartan in order to keep the weight down and insure that it was as fast and maneuverable as possible. It was fairly spacious, though, and easily accommodated a two-person crew. The pilot sat of the port side, and the copilot on the starboard side directly behind two dedicated consoles of similar design. The chairs used by the crew reclined and swiveled, allowing them to easily reach the various controls. A series of large windows provided an excellent all-round view of the surrounding space, which was perfect for racing.

The pilot's station controlled the propulsion and attitude of the ship, and also acted as the primary communications station. A larger inset console to the right of this position could be used to track the movements of other ships. The copilot's control panel displayed readings from the EPS relays, and provided an audible warning if any malfunctions were detected.

A short ladder was located at the rear of the cockpit and led to the deck below, where the propulsion systems could be accessed. In common with the engineering area, the majority of the internal systems could be repaired with a relatively small set of tools carried aboard the vessel. There did not appear to be a personal transporter system, although it was possible for other vessels to beam the occupants out.



▲ As the pilot, Irina was seated on the port side of the cockpit, while her copilot, Joxom, sat directly next to her and was responsible for operating secondary systems and monitoring other ships.

**DATA FEED**

Irina said she designed her own impulse drive on her ship. It required enriched deuterium fuel to power the impulse engines. A fuel converter had to be installed on the *Delta Flyer* in order for its impulse engines to run on enriched deuterium, one of the prerequisites for a ship to be allowed entry into the Trans-stellar Rally.

COMPETING SPECIES

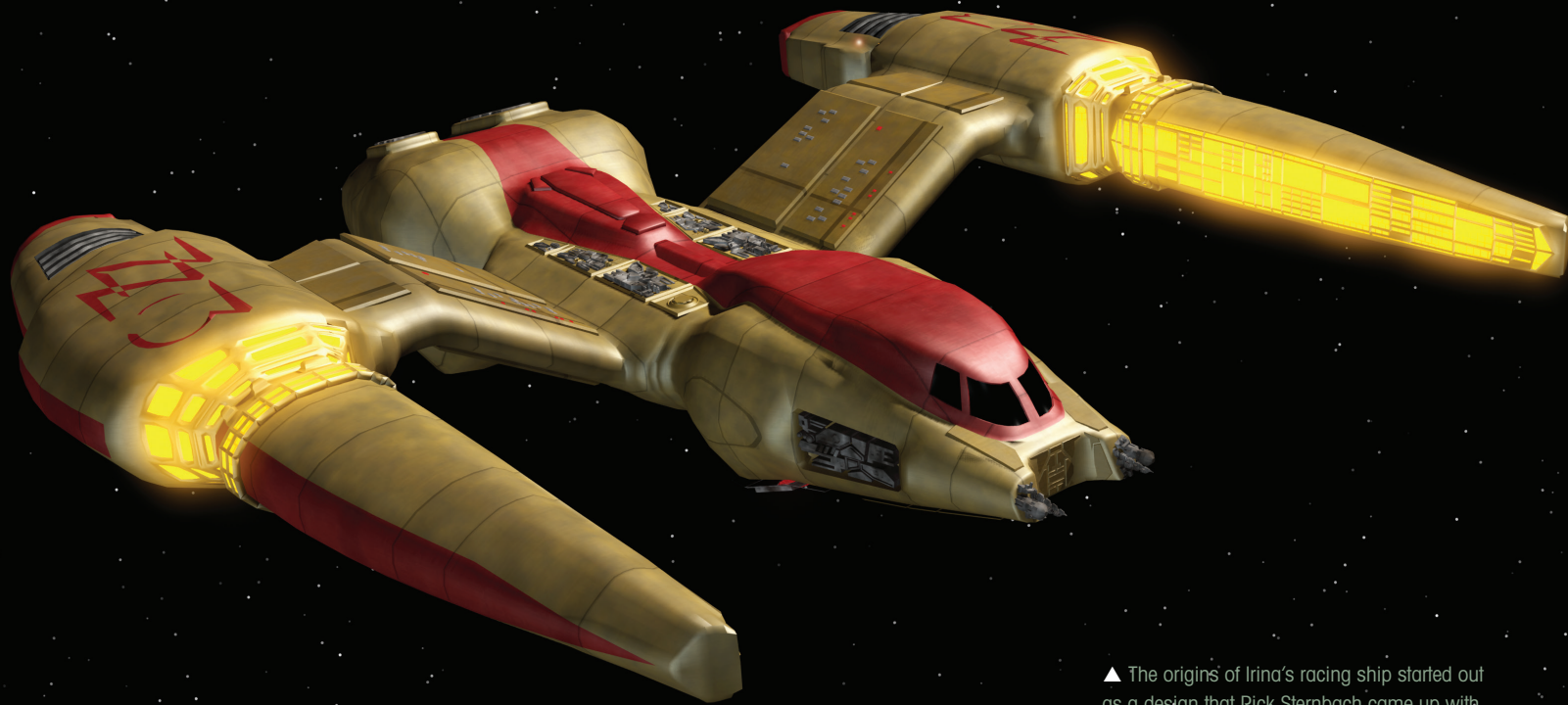
The inaugural Antarian Trans-stellar Rally of 2377 featured 12 vessels from at least five species. As well as the *Delta Flyer*, ships from the Aksani, Chessu, Imhotep and Terrellian races took part.

SAME NAME

Irina was a Terrellian, but a different species, also known as Terrellian, were members of the Federation, and Chakotay fought one in a boxing match when he was a cadet in around 2349.

MYSTERIOUS AREA

A Möbius Inversion was a small wormhole with a level six subspace distortion filled with gravimetric shears. Radiation from the anomaly blocked sensors, so spectators of the rally lost contact with the ships while they were in the wormhole, and had no idea who was winning until they emerged.



▲ The origins of Irina's racing ship started out as a design that Rick Sternbach came up with for another species seen in 'Latent Image.' The basic shape remained the same, but the digital artists gave it a slick new paint job and added a few extra details to transform it into one of the star ships of 'Drive.'

DESIGNING IRINA'S

RACING SHIP

To create Irina's racing ship, the VFX department modified a vessel that illustrator Rick Sternbach had devised for an earlier episode.

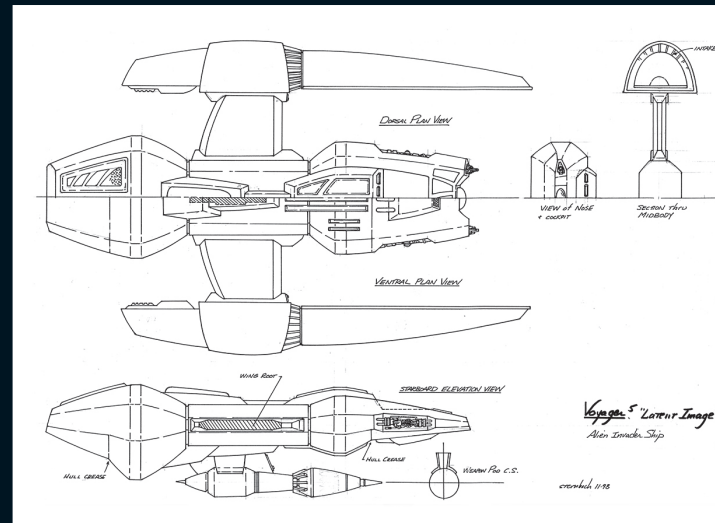
Many of the ships that were seen in the *STAR TREK: VOYAGER* episode 'Drive' were reuses of vessels that had been seen before. 'Drive' was a very expensive show in terms of special effects, as it featured many sequences

of ships flying through space. To help keep costs down, the digital artists were asked to recycle ships and effects that they had used before.

For example, the Möbius Inversion wormhole was a reuse of the quantum slipstream effect that had been used in

'Hope and Fear' and 'Timeless.' Similarly, many of the starships were tweaked versions of vessels that had made brief earlier appearances.

Irina's racing ship actually started out as a vessel senior illustrator Rick Sternbach had designed for an



▲ This was the artwork that Rick Sternbach initially came up with for a vessel belonging to an unnamed alien that attacked the *Delta Flyer* in 'Latent Image.'

unnamed alien that appeared in the Season Five episode 'Latent Image.' The digital artists changed the color and added racing stripes to the CG model to turn it into Irina's ship, but even without these alterations it was highly unlikely that anyone would notice that it had been used before as it appeared so briefly in 'Latent Image.'

Similarly, many of the other vessels that appeared in the Antarian Trans-stellar Rally started life as something else. Assan's Imhotep

racing shuttle appeared to be a fairly major modification of a Cardassian workbee from the *DEEP SPACE NINE* episode 'Tacking into the Wind,' while another looked very similar to the Benthan coaxial drive vessel seen in the fourth season episode 'Vis a Vis.'

REUSED SHIPS

In fact, by looking extremely closely at the footage from the rally, it appeared that just about all of the competing vessels had been seen before in one



▲ It was highly unlikely that anyone would remember the alien ship from 'Latent Image,' as the picture above shows about the best view the audience had of it.

shape or another. For example, some of the ships seen on the starting line at the rally included a Qomer ship from 'Virtuoso,' Kes' shuttle from 'Fury,' and even a Bajoran raider from *DEEP SPACE NINE* episodes like 'Shadows and Symbols.' However, with a color change here and a slight alteration there, the digital artists were able to recycle these vessels and make them look slightly different. This saved a huge amount of money without spoiling the story, and for the most part no one noticed.



▲ The top two ships seen here in 'Drive' were another example of a recycled ship, as the design had first been seen as a coaxial warp drive ship in 'Vis à Vis.'



▲ It wasn't just previously seen ships that were altered and reused in 'Drive,' but the quantum slipstream effect was repurposed to depict the Möbius Inversion wormhole.



◀ 'Workforce' found the crew brainwashed and working in an industrial facility. Janeway fell in love with Jaffen, but writer Bryan Fuller wanted the story to feature Chakotay as the romantic interest.

▶ Chakotay returned from an away mission to find the crew had been abducted and their memories had been wiped. He took on an alien appearance to infiltrate the facility where his crewmates worked.



◀ After an energy bolt from a spatial rift caused *Voyager* to fracture into 37 different timeframes in 'Shattered,' Chakotay led a pre-stranded Janeway around her ship, showing her key moments from the past and future. Bryan Fuller wanted Chakotay and Janeway to acknowledge the feelings they had for one another while they were existing out of normal time, but could never act on because they were in command of the ship.

▼ Bryan Fuller wanted to bring back the Kobali for the story that ended up as 'Workforce.' He thought it would have been better if the crew had died, but the Kobali had brought them back as they did with Ensign Lyndsay Ballard in 'Ashes to Ashes.'

to end up. We amped up our communication with Earth and the progression of B'Elanna and Tom's relationship, and we really tried to push characters farther than we'd seen them go before."

The final year saw some spectacular shows, notably the two-parter 'Workforce.' The episode was written by Ken Biller and Bryan Fuller. "When I was coming up with the first draft of that I pitched that *Voyager* hit some kind of subspace anomaly that cracked the warp core," said Fuller. "We had to eject the warp core and the warp

core exploded, the ship was hit by the shockwave and was rendered inhospitable to human life, crewmen were scrambling to the escape pods, and we played it like 'Titanic': *Voyager* was going down. And the crewmen got into the escape pods and launched, and then realized that there were micro-fractures throughout all the hulls and oxygen was venting and everybody died – except for an away team, who were conveniently on a mission. They came back and not only did they see that everybody had died but that the Kobali, who as you might remember from 'Ashes to Ashes' were a race that propagated itself by harvesting the dead of other species, were essentially assimilating the crew into Kobali culture.

RESCUE MISSION

"Chakotay and Paris and Neelix were the away team, and they would be at each other because Chakotay wanted to rescue the crew and reverse this Kobali process. But Paris, because the warp core had gone and there was no way the crew was ever going to get back to Earth, wanted to let them just be who they were going to be on this Kobali world with their new identities. But somewhere along the line Ken decided that he wanted to take out the whole Kobali aspect of it and just make them brainwashed and working in

a factory, as opposed to being integrated into a new culture with new identities where Janeway would have a family, a husband and children, and Harry Kim would have a wife and child. A lot of that carried through into 'Workforce,' but a lot of it was also shed to get to a much simpler, cleaner story, I think."

ETERNAL TRUTH

Chakotay had plenty to do in that show; he had a good season overall, starting with 'Shattered,' written by Michael Taylor from a story conceived by Mike Sussman and himself. Taylor said, "'Shattered' was a favorite show of mine, where Chakotay from the future, our present, took Janeway from the past on a tour of the future in a sort of a Dickensian story. It was about the future not being what you expected. Something like that was a kind of universal truth that anyone could relate to. That was what I found most compelling about the franchise. *STAR TREK* allowed you to tell stories about those kinds of situations and how they affected us. What I was always been most interested in were stories that put our characters in unique situations, and it was not so much whether the characters were Chakotay or Janeway but the fact that they could be any one of us in a situation like that."

Bryan Fuller had wanted to revisit the Janeway-Chakotay romance in this show too. "When we were breaking 'Shattered' I was trying to get the story to go to a place where in that final scene, Janeway would ask Chakotay how good friends were they really, and he would tell her – more subtle than this, but basically – 'I've always been in love with you, and because of our situation I couldn't really act on it, and neither could you.' And Janeway would then return not remembering that incident, but the confession would flavor all of the episodes to follow and the audience would understand that here was a romance that could never be."

TENDING TO EVERYONE

Returning to the rest of the crew, the season saw plenty of action for some characters who hadn't had a lot to do in previous seasons. Brannon Braga hoped that the audience would like the way all the characters were wrapped up. "That was our goal every year," he said. "It was an ensemble cast and obviously you could focus on your most popular characters, but you had to tend to all of them because they were part of the family."

Writer Rob Doherty agreed: "I thought the season was devoted to touching base with the characters to see where they were after seven





▲ In 'Lineage,' B'Elanna Torres discovered that she was pregnant, and it brought back her difficult past and insecurities after her human father left her when she was young. It culminated in her trying to genetically alter her unborn child's Klingon features to spare the baby going through what she had endured.

years – how far they'd come, and where they might be going. I thought we did a pretty good job of tying up loose ends."

SHARING THE SPOTLIGHT

Looking at the other characters, Doherty pointed to someone who had plenty to do in the final year. "B'Elanna, I thought, had a pretty good season," he said. "'Prophecy' was a great show; 'Lineage' was a great show. Her pregnancy as a subplot throughout the season had been very present. Neelix may not have had many episodes this year that were devoted to him, but he played

an important part in just about every show. We tried, as we always did, to shine the spotlight on every single character. Personally I was satisfied with how we handled each of the characters."

Raf Green worked on the story for 'Prophecy,' and enjoyed his involvement with one of *STAR TREK*'s great alien races. "That was really fun," he said. "I went nuts on researching the Klingons and I had the prophecy worked out so much farther than it ever got in the show itself. They thought Kahless was going to reappear on a star and then this sect had decided they'd pointed out the wrong one and it was actually a Delta Quadrant star, etcetera, so I had a lot of fun researching that. And I had fun with the whole thing of Neelix and Kim being chased around by the Klingon woman. I just loved that last scene with Tuvok coming back to his quarters and finding Neelix with a black eye. I thought that was one of the funniest things I saw on the show!"

NEELIX ENTHUSIAST

Green also wrote 'Destiny,' Neelix's big show of the season. "I'd been a huge fan of Neelix," said Green. "Ethan (Phillips) is a wonderful actor. I pitched out this idea in many different forms, some of which Ken (Biller) liked better than others, but what I was interested in was that Neelix

seemed to be such a good father figure to Naomi and I thought it would be interesting to see, what if he was compelled to be fatherly to a Talaxian; and I also wanted to see him be macho and heroic. Not that we hadn't seen glimmers of that, but usually he was serving hors d'oeuvres or telling stories and being sweet, and I thought it would be cool to kind of push him and see what happens."

GRAND THEMES

A show that dealt with wider issues rather than focussing on characters was 'The Void,' in which the crew were confronted by powerful and aggressive races and struggled to survive. James Kahn, who co-wrote the teleplay, said, "Oftentimes things began to emerge as we started writing; the characters would tell us what the themes were as we began getting into the plot. 'The Void' from the beginning was very specifically supposed to harken back to *TNG* kinds of themes and greater issues about the Federation; the original title of the show was actually going to be 'Federation.' We were thrown into this completely void-like circumstance, and what would we do; we'd probably try and start a Federation again."

Raf Green added, "What I was really fascinated about was the idea of pushing *VOYAGER* really to the moral brink. What was the line between protecting your crew and surviving, and staying true to Starfleet and Janeway's own morality? 'The Void' – and this was something Ken Biller and I talked about – was a kind of distillation of all of *VOYAGER* into one episode. You were trapped in this impossible place and the stakes were very high, and survival was such a desperate thing."

REACHING THE END

What do the writers think have been the special strengths of this final season? Rob Doherty said, "Personally, I found this season very rewarding. I thought that we had some of our best pure science fiction shows, along with some of our best pure character shows." James Kahn agreed: "I thought we really focused on the characters and bringing their arcs to some kind of resolution. It was like a seven-year novel."

Michael Taylor added, "I thought there were still more stories out there; if we wanted to we could probably have found another seven years' worth



◀ Neelix found an eager lover in 'Prophecy,' when Ch'Regha, unsuccessful with Kim, turned her Klingon passions toward him. This was much to the frustration of Tuvok, who was sharing quarters with Neelix at the time.

► In 'Prophecy,' *Voyager* became a battleground for the descendants of a group of Klingon zealots, who believed that Torres' unborn child was their savior. After learning that the baby was not pure Klingon, T'Greth challenged Paris to a fight to the death to prove that Torres was not carrying their savior.



◀ Neelix's story came to an end in 'Homestead' when he was reunited with his people, who were living inside an asteroid. Neelix became a hero when he saved the Talaxians from a group of miners, and he decided to leave *Voyager* to remain with Dexa, whom he had fallen in love with, and her son Brax.

of shows to deal with these folks! It was exciting to see the characters at some sort of end point, after which they'd go off on some life you were no longer a part of, but maybe there were fans out there who would continue to plot their courses. There have been a bunch of imaginative shows, and a lot of good writing and good acting. I thought it was a fitting final season for *VOYAGER*."

ON SCREEN



TRIVIA

O'Zaal [pictured below] the Antarian ambassador from 'Drive,' who organized the Trans-stellar Rally, was played by Brian George. He had previously portrayed Dr. Bashir's father, Richard Bashir, in the *DEEP SPACE NINE* episode 'Doctor Bashir, I Presume.' Meanwhile, Patrick Kilpatrick, who played Assan in 'Drive,' had previously appeared as Razik, a Kazon, in the *VOYAGER* episode 'Initiations,' and Reese, a Starfleet soldier, in the *DEEP SPACE NINE* episode 'The Siege of AR-558.'



Tom Paris and B'Elanna Torres had got married by the end of 'Drive,' although the wedding ceremony was never seen. However, bio-mimetic duplicates of Tom and B'Elanna were married by a bio-mimetic copy of Captain Janeway over a year earlier in the episode 'Course: Oblivion.'



In 'Drive,' B'Elanna Torres wanted to use the holodeck to take Tom Paris on holiday to a simulation of Giedi Prime. She described this planet as a lush paradise that made Risa look like a tourist trap. In the 'Dune' series of novels by Frank Herbert, Gedi Prime was the Harkonnen homeworld, which was described as a polluted industrial wasteland.

- FIRST APPEARANCE: 'DRIVE' (VOY)
- TV APPEARANCE: STAR TREK: VOYAGER
- DESIGNED BY: Rick Sternbach

KEY APPEARANCES

STAR TREK: VOYAGER 'Drive'

While out testing the newly rebuilt *Delta Flyer*, Tom Paris and Harry Kim become involved in an impromptu race with a stunning-looking starship piloted by an equally attractive female named Irina.

The *Delta Flyer* wins by a nose after Irina's ship clips an asteroid, causing the cabin to fill with nyocene gas. She is transported to safety, while her ship is taken back to the *U.S.S. Voyager*.

Irina informs them that she is on the way to the Antarian Trans-Stellar Rally, a race organized to celebrate a peace treaty between four different species. She suggests that Paris and Kim should

enter the race with the *Delta Flyer*, and Captain Janeway thinks it is a good idea as it will help with ship moral.

One person who is not so happy is B'Elanna Torres, as she has gone to considerable trouble to organize a holodeck holiday with Paris. Trying to save her relationship, Torres decides to take part in the race as Paris' co-pilot in place of Kim.

The race is incredibly demanding and dangerous, but near the end the couple realize it is in fact deadly. It seems that Irina has rigged the *Delta Flyer* with a bomb, which is due to explode at the finishing line, as she wants to reignite the recent war.

COMING IN ISSUE 134

VULCAN SURVEY SHIP



EVERY TWO WEEKS AT YOUR RETAILER



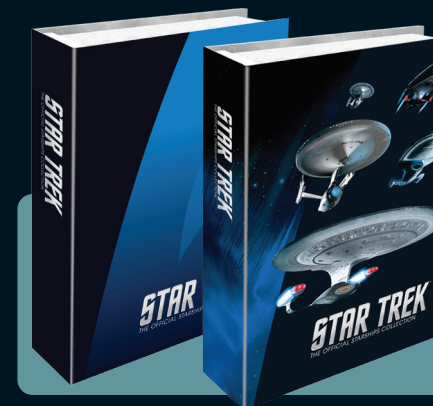
Inside your magazine

- In-depth profile of a **Vulcan survey ship**, an example of which was sent to investigate the launch of Earth's first artificial satellite, Sputnik 1 in 1957
- Illustrator **John Eaves** explains how he came up with a concept for a 20th-century Vulcan ship for the *ENTERPRISE* episode 'Carbon Creek'
- Writers **Mike Sussman** and **Phyllis Strong** talk about their experiences of working on *ENTERPRISE* in the early days

eaglemoss.com/shop

The place to order your STAR TREK ships

- Use the special **INTRODUCTORY DISCOUNT CODE STAR10** to get **10% OFF** your first online order
- Sign up for the **NEWSLETTER** to be the first to hear about **EXCLUSIVE ONLINE OFFERS**
- All orders are delivered direct to your door. **ANY DAMAGES REPLACED - NO QUESTIONS ASKED!**



BINDERS
Order specially-designed binders to store your magazines. There are two designs to choose from.



BACK ISSUES

Complete your collection by ordering any missing issues, and sign up to the newsletter to be the first to know when rare items come back into stock.

eaglemoss.com/shop

STAR TREK™

