

145

# STAR TREK™

THE OFFICIAL STARSHIPS COLLECTION



LENGTH: 320 METERS

LAUNCHED: 24th C

CREW: 56

WEAPON: PHASERS

## NIGHTINGALE

# NIGHTINGALE

## Contents

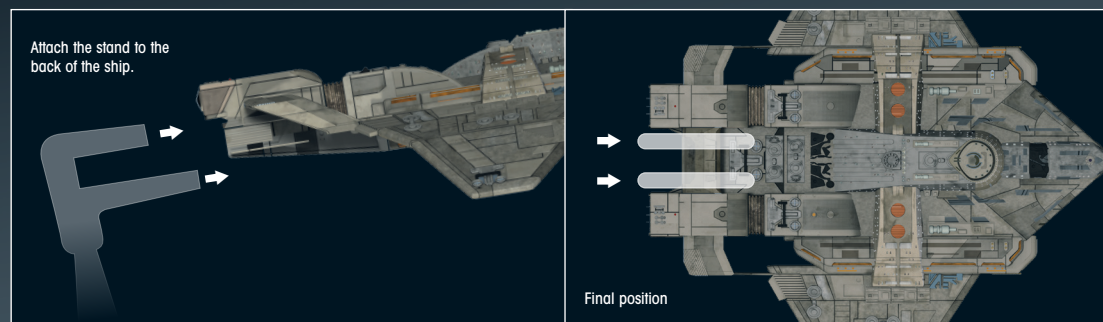
P04: *NIGHTINGALE*

P10: DESIGNING THE SHIP

P12: GARRATT WANG ON HARRY KIM

P18: ON SCREEN


### Stand assembly:



## NIGHTINGALE SPECIFICATION



OPERATED BY:	THE KRAYLOR
TYPE:	MEDICAL TRANSPORT
IN OPERATION:	2370s
LOCATION:	DELTA QUADRANT
LENGTH:	320 METERS (APPROX.)
CREW:	56
WEAPONRY:	PHASERS

 **SHOP ONLINE**

There's more to us than you might think!  
Order **XL Starships, bonus editions, binders** to safely store your magazines **and much more!**

STAR TREK – The Official Starships Collection is published fortnightly.

**DON'T MISS AN ISSUE:** Place a regular order with your magazine retailer.

**SUBSCRIBE** and receive exclusive free gifts – [www.startrek-starships.com](http://www.startrek-starships.com)  
Call 0344 493 6091  
Post the subscription form included with issues 1 to 5

**BACK ISSUES**  
To order back issues:  
Subscribers call 0344 493 6091.  
Retail customers call 020 7429 4000

**UK DISTRIBUTOR:** SEYMOUR DISTRIBUTION LTD  
2 East Poultry Avenue, London EC1A 9PT  
Tel: 020 7429 4000

**shop.eagleboss.com**

### EAGLEMOSS COLLECTIONS

Eagleboss Ltd. 2019  
1st Floor, Kensington Village, Avonmore Road,  
W14 8TS, London, UK. All rights reserved.

™ & © 2019 CBS Studios Inc. © 2019 Paramount  
Pictures Corp. STAR TREK and related marks and  
logos are trademarks of CBS Studios Inc. All Rights  
Reserved.

STAR TREK – The Official Starships Collection is  
published fortnightly.

**DON'T MISS AN ISSUE:** Place a regular order with  
your magazine retailer.

**SUBSCRIBE** and receive exclusive free gifts –  
[www.startrek-starships.com](http://www.startrek-starships.com)  
Call 0344 493 6091  
Post the subscription form included with issues 1 to 5

**BACK ISSUES**  
To order back issues:  
Subscribers call 0344 493 6091.  
Retail customers call 020 7429 4000

**UK DISTRIBUTOR:** SEYMOUR DISTRIBUTION LTD  
2 East Poultry Avenue, London EC1A 9PT  
Tel: 020 7429 4000

 **Find us on  
Facebook**  
Join us online for competitions, updates and more!

Email: [info@seymour.co.uk](mailto:info@seymour.co.uk)  
Website: [www.seymour.co.uk](http://www.seymour.co.uk)

**UK CUSTOMER SERVICES:**  
0344 493 6091  
[startrek-ship@eagleboss-service.com](mailto:startrek-ship@eagleboss-service.com)

**Australia:** (02) 8378 7930  
[customer-service-australia@eagleboss-service.com](mailto:customer-service-australia@eagleboss-service.com)

**New Zealand:** (09) 928 4493  
[info@mycollectables.co.nz](mailto:info@mycollectables.co.nz)

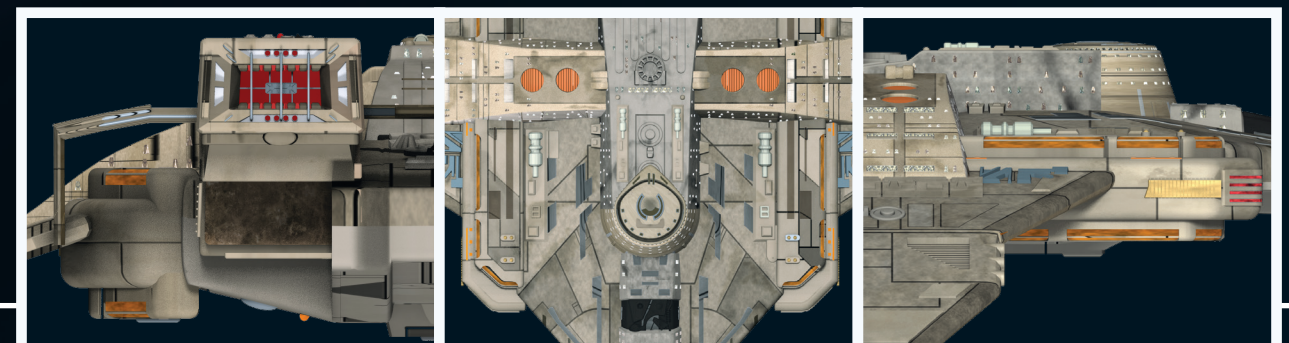
**South Africa:** (011) 265 4307  
[service@jacklin.co.za](mailto:service@jacklin.co.za)

**Malaysia:** (03) 8020 7112  
[sales@allscript.com](mailto:sales@allscript.com)

**Singapore:** (65) 6287 7090  
[sales@allscript.com](mailto:sales@allscript.com)

**OVERSEAS BACK ISSUES**  
Place your order with your local magazine retailer.

Recommended age 14+.  
Warning! Collectable models.  
Not designed or intended for play by children.  
Do not dispose of in domestic waste.



[www.startrek-starships.com](http://www.startrek-starships.com)

▼ The *Nightingale* was a medical transport ship operated by a Delta Quadrant species called the Kraylor in the 2370s. It was a fairly standard-looking starship, and nothing about its outward appearance suggested it was used for humanitarian purposes. It looked more like a small combat ship, but it was easily outmatched by the warships used by the Annari.



was almost impossible for supply ships transporting food and medicine to reach the planet's surface. Their world was protected by a shield grid, which prevented the Annari from launching an invasion force, but the Kraylor population was slowly being starved into submission.

The Kraylor did manage to bypass the blockade in one or two ships, including the *Nightingale*. This vessel was originally given the rather generic name of "medical transport 136" before Harry Kim took command of it.

#### BASIC SHIP

It was a fairly unremarkable ship both in appearance and abilities. It was approximately 320 meters in length and originally had a crew complement of 56. The main body of the ship was comprised of blocky, squared-off components, with a substantial raised section on top that contained the bridge. Downward sloping wings were affixed to the warp nacelles, which were attached to either side of the main body. The nacelles glowed orange, and were capable of powering the ship to a cruising speed of warp 6.

The *Nightingale* possessed several banks of phasers and was protected by defensive shields, but its defensive capabilities were rather limited and no match for the Annari vessels. Other facilities on board the *Nightingale* included a shuttlebay, escape pods, a dedicated

The *Nightingale* was a Kraylor vessel renamed by Ensign Harry Kim after the famous 19th-century human nurse Florence Nightingale because he believed it was a medical ship on a mission of mercy.

The Kraylor were a Delta Quadrant species, who were at war with the neighboring Annari since at least 2374. The Kraylor's homeworld had been blockaded by Annari vessels, which meant that it

# NIGHTINGALE

The *Nightingale* appeared to be a medical supply ship, but it was in fact testing a new cloaking device.

#### DATA FEED

Although his name was not mentioned on screen, according to the script the name of the original commander of the *Nightingale* was Captain Brell.



◀ The *Delta Flyer II* saved the *Nightingale* from destruction when it fought off an attack from an Annari warship. Harry Kim was reluctant to involve himself in their conflict, but he believed that he was saving the lives of a crew who were on a mission of mercy.



▶ Although Harry Kim only expected to be in command of the *Nightingale* for a few days, he made himself at home by moving some of his personal belongings, including his saxophone, into the ready room aboard the ship. He believed it was important to forge a personal connection to the ship to be a good captain, but he later realized commanding a ship was much more complicated than he had originally imagined.



◀ There was nothing particularly noteworthy about the *Nightingale*. It was a modest starship equipped with in-built warp nacelles, which could power it to a cruising speed of just warp 6. It did, however, possess a new cloaking device, which had the potential to change the outcome of the war between the Kraylor and the Annari.

▶ Before the *Nightingale* reached the safety of the defensive shield surrounding the Kraylor homeworld, it was caught in the tractor beam of an Annari ship. Kim reversed the *Nightingale's* shield polarity, which threw it clear and allowed them to outrun their pursuers to the defense perimeter.



▲ While making their way back to the Kraylor homeworld, the cloaking device failed, and the *Nightingale* came under attack from several Annari vessels. They only just managed to get the cloaking device working again before the ship was destroyed. It was at this point that Kim realized that the *Nightingale* was far more important than just a regular medical supply ship.

engineering section and the equivalent of a captain's ready room.

The most interesting feature of the *Nightingale*, however, was a prototype cloaking device. It had been developed at a secret off-world base under the leadership of a Kraylor scientist named Loken and several of his assistants.

Loken hoped that if the cloaking device proved successful, it would allow them to fly straight through the blockade around their planet and deliver much needed supplies. The cloaking device was effective, but it proved less than reliable due to power fluctuations within the ship's propulsion system, and it required constant attention to stop it from destabilizing.

In 2377, the *Nightingale's* cloaking device failed and it came under attack by an Annari vessel. It

issued a distress call which was picked up by Harry Kim, Seven of Nine and Neelix aboard the *Delta Flyer II*. Normally, the Prime Directive would have prevented them from becoming involved in an alien conflict, but the Kraylor vessel claimed to be on a humanitarian mission delivering medical supplies. It was also clear that with its shields having failed, it would soon be destroyed and Kim took the decision to neutralize the Annari ship.

#### MERCY MISSION

Kim found out that 29 people had been killed in the attack, and the survivors pleaded with him to help them make repairs and take command. The survivors, including Loken, said that they were doctors and medical personnel, who had been charged with delivering new vaccines to their

homeworld. Kim felt that he could not turn them down and he persuaded Captain Janeway to allow him to take command of the Kraylor ship, which he renamed the *Nightingale*.

Kim was enormously excited at being given his first real command, but it soon became clear that Loken had lied to him. The ship was not delivering medical supplies, but was in fact the testbed for their new cloaking device..

When Kim realized he was in direct violation of the Prime Directive, he ordered the *Nightingale* to reverse course, but the Kraylor crew mutinied and relieved him of command. In the end, Kim realized that they would never survive without his help, and despite serious reservations he helped them evade the blockade, and the cloaking device was safely delivered to the Kraylor homeworld.

#### DATA FEED

Loken was the lead Kraylor scientist, who developed and fitted the cloaking device the *Nightingale*. He lied to Harry Kim, saying that he and the other survivors on board the ship were doctors and members of a research team that were carrying new vaccines to their homeland. Loken knew that as scientists with little combat experience, they stood a much greater chance of reaching home if Kim took command of their ship.



**BRIDGE CONTROLS**

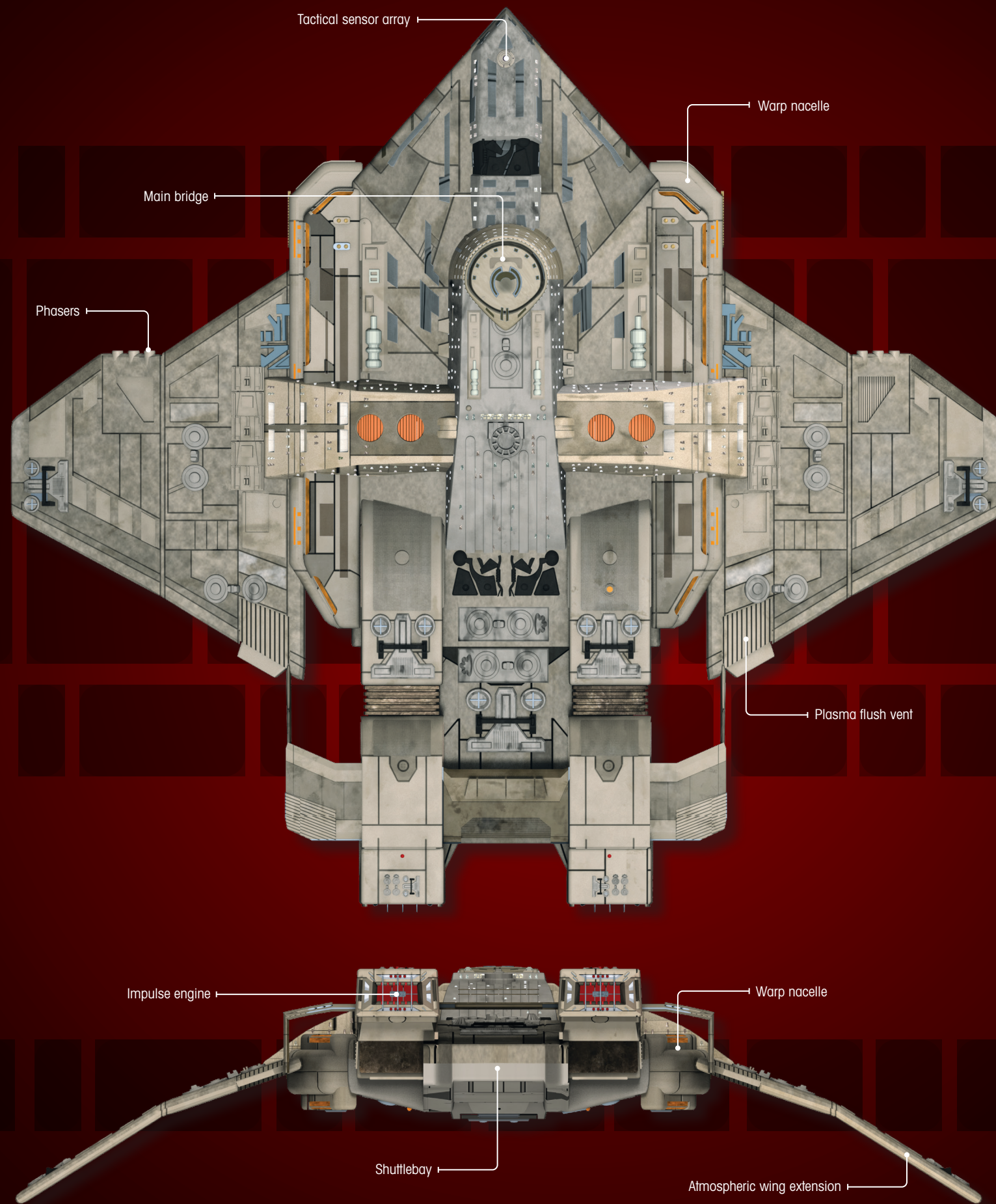
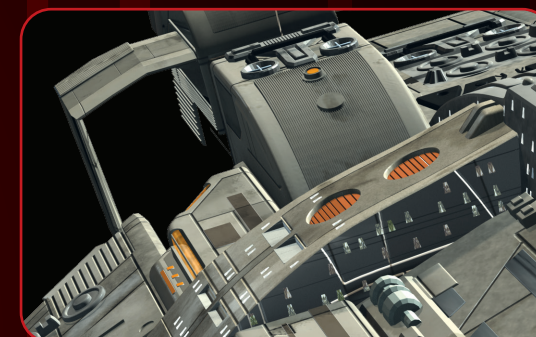
The command center of the *Nightingale* was not too dissimilar to that of many Starfleet ships, although much more basic and plain. It was a roughly circular room with the captain's chair in the middle and a viewscreen at the front. The helm console was a single work station near the front, which was operated from a standing position. It incorporated the primary navigational sensors and auto-navigation facilities. Other consoles situated in the bulkhead walls around the perimeter of the bridge were equipped with display screens and touch-sensitive controls. They operated systems such as tactical and life support.

The work station at the rear of the bridge had a number of functions, including monitoring shipwide power, operating long-range sensors and activating the communication systems.

The rear work station also incorporated the controls for the ship's most important system – its cloaking device. This piece of technology had been developed at a secret off-world base under the leadership of a Kraylor scientist named Loken and several of his assistants. It was new and being tested for the first time on a starship, and as a result was not that reliable. Any power fluctuations within the propulsion system could cause the primary cloaking generator to fail, making the ship visible to their Annari enemies.



▲ The bridge of the *Nightingale* was smaller and less sophisticated than those of Starfleet ships, but it operated on the same principles, with various work stations encircling the central captain's chair.

**BRIDGE DETAIL****IMPULSE ENGINE DETAIL****FUEL & CONSUMABLES RESUPPLY DETAIL****DATA FEED**

When the *Nightingale's* cloaking device went offline, it was because its primary generator was failing. The field polarity of the generator had fallen to 206.4, which was much too low. To raise it, they had to bypass the driver coil and shunt power directly to the polaron matrix. This repolarized the containment field and brought the cloak back online.

**MORE ENCOUNTERS**

The crew of the *U.S.S. Voyager* had two more run-ins with the Kraylor in 2377. First, they encountered a Kraylor ship when they were both trapped in the Void, and they met more Kraylor in the episode 'Workforce.'

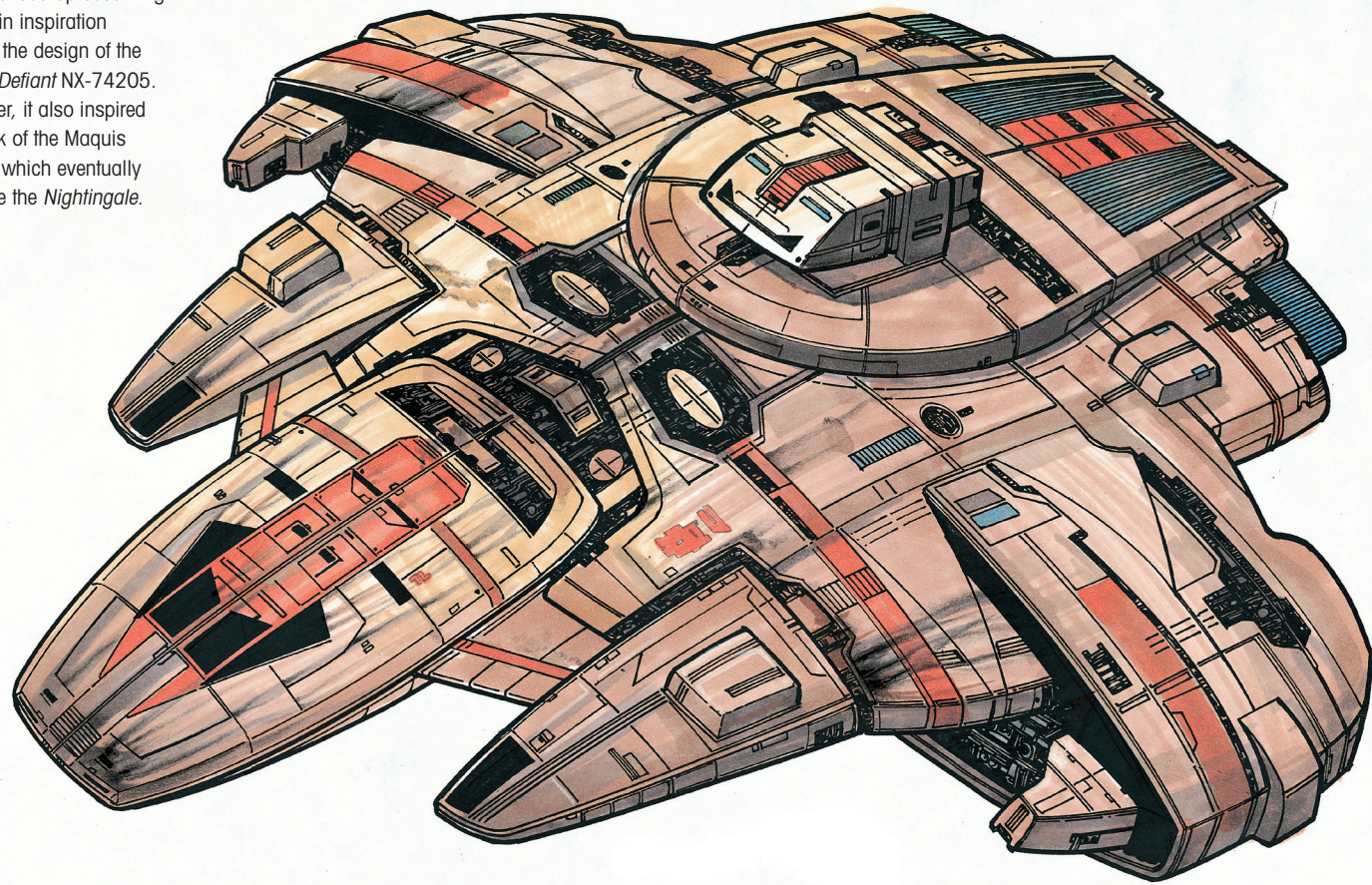
**LONG SIEGE**

By the time the crew of the *U.S.S. Voyager* made first contact with the Kraylor in 2377, their home planet had been under a blockade established by the Annari for three years.

**FITTING NAME**

Harry Kim renamed the Kraylor medical transport *Nightingale* after Florence Nightingale, who was renowned for nursing wounded soldiers on Earth. Kim thought it an appropriate name because he believed the ship was delivering much needed vaccines and medicines to the sick on the Kraylor homeworld.

▼ This illustration by Jim Martin ended up becoming the main inspiration behind the design of the U.S.S. *Defiant* NX-74205. However, it also inspired the look of the Maquis fighter, which eventually became the *Nightingale*.



DESIGNING THE

# NIGHTINGALE

A starship originally design by Jim Martin to be a Federation attack fighter was modified by CG artists in order to turn into the *Nightingale*.

The *Nightingale* was a CG model created by effects house Foundation Imaging. Its appearance was very closely based on the physical studio model of what was originally a Maquis fighter created for *THE DEEP SPACE NINE* episode 'The Maquis, Part II.'

This ship was designed by Jim Martin, and it was one of his first creations after he joined the *DEEP SPACE NINE* art department. He would go on to

become a senior production illustrator, but at that time he was still a production assistant, and his main responsibilities were helping out production designer Herman Zimmerman and scenic artist Doug Drexler, as well as making sure the art department was always stocked.

As one of the youngest members of the art department, Martin was influenced by the fighter craft designs seen in the *Star Wars* franchise. His

design certainly ended up being different than a traditional *STAR TREK* creation with outriggers and prominent warp nacelles. In fact, this design would form the basis on what would become the U.S.S. *Defiant* NX-74205, but a version of it was also chosen to represent a Maquis fighter, and it appeared again as the same vessel in *THE NEXT GENERATION* episode 'Preemptive Strike.' At the time, *THE NEXT GENERATION* and *DEEP SPACE NINE* were on TV concurrently, so these appearances were broadcast just two weeks apart.

The studio model was built at Tony Meininger's Brazil-Fabrication & Design model shop, and after its outing in 'Preemptive Strike' it appeared once more in the *DEEP SPACE NINE* episode 'A Time to Stand,' this time as a Federation attack fighter. As there were no changes to the model, many have assumed that the ship was originally a Federation attack fighter, and the Maquis appropriated for their use. In other words, although it was first seen on screen as a Maquis fighter, it really should have been known as a Federation attack fighter that had been stolen by the renegade group.

## CG REBUILD

A CG version of the Federation attack fighter was then created at effects house Digital Muse by CG artist Bruce Banit for the *DEEP SPACE NINE* episode 'Sacrifice of Angels.' He had the physical studio model in front of him while he was doing it, and tried to replicate it as closely as possible.

Later, this CG model provided the basis for the look of the Kraylor medical transport, which Harry Kim renamed *Nightingale*. It was modified at Foundation Imaging, and the CG artists built up the area around the cockpit, turning it into a much more substantial bridge area. Other changes included altering the bow of the ship, the area behind the bridge, and beefing up the warp nacelles. Finally, it was given a new paint job and the engines now glowed orange rather than blue.

The CG ship in this configuration was seen for a final time in the *VOYAGER* episode 'The Void,' when it, rather confusingly, appeared as an Annari warship commanded by General Valen. Why a design established as a Kraylor vessel would then be used by their enemies, the Annari, is not clear. One can only assume that General Valen seized it from the Kraylor and used it as his own.

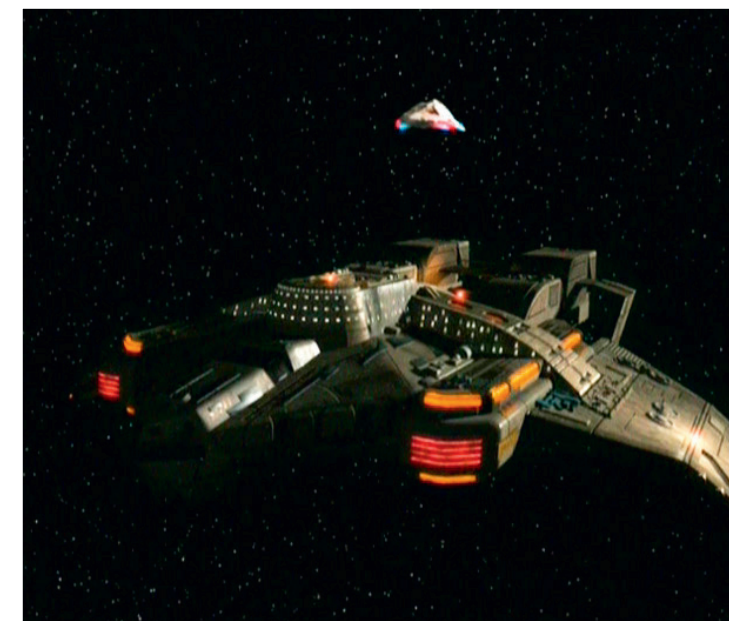
► The studio model that was built by the model shop owned by Tony Meininger used Jim Martin's concept as the jumping off point for a fighter starship. It twice appeared as a fighter operated by the Maquis, and then in this picture it became a Federation attack fighter in the *DEEP SPACE NINE* episode 'A Time to Stand.'



► This close-up of the physical studio model showed it was quite different than Jim Martin's concept, but it retained the in-built warp-nacelles, which was a new look for a *STAR TREK* ship. The studio model was faithfully copied when it was turned into a CG model at Digital Muse, and the CG version appeared several times beginning with the *DEEP SPACE NINE* episode 'Sacrifice of Angels.'



► The CG version of the Federation attack fighter formed the basis of the *Nightingale*. Foundation Imaging added various parts and changed its color, but it was essentially the same ship. This was obviously much cheaper and quicker than designing and building a new ship from scratch.





GARRATT WANG ON

# HARRY KIM

In an interview not long after *STAR TREK: VOYAGER* finished its run, Garratt Wang talked about his time playing the ever-eager ensign.

Looking back on his early days as Harry Kim, Garratt Wang recalled he found him an easy character to get into. He said, "Kim was an easier character to start off with, I think, because he was the youngest member of Starfleet on the crew, so by nature he was a little more naive than the rest of them – which kind of went hand in hand with myself at the time. But I did have to take away

a few layers. When I started playing Kim I was probably three or four years older than he was supposed to be, so I had to go down in my maturity level a little bit."

That doesn't mean Wang saw young Harry as a replica of himself. "Other than the fact that he was young and the fact that he was a hard worker – that was where the similarity probably

▲ Garratt Wang felt well qualified to play Harry Kim, as at that time neither of them had much experience in their respective professions. Both of them were very keen to do well, but Wang stresses he is much more fun-loving than Kim.

ended," said Wang. "I thought Kim was much more serious than myself. I really enjoy making people laugh and entertaining people, whereas Kim was a little more serious about his work. And his sense of humor wasn't exactly where I wanted it to be, so throughout the seasons I tried to get the writers to inject a little bit more humor into him." Those attempts weren't 100 percent successful, despite the fact that Wang tried to introduce a few sneaky touches. "A lot of times that we tried to do anything a little more risky, they'd tell us to pull it back," said Wang. "They'd say, 'Don't do that!' But in the later seasons, whenever Kim was in the background of a scene, I would do a few little reactions to things that were going on around me. Watch his eyes – that's the best way I can say it!"

## FRIENDS ON BOARD

Looking at onboard interaction for Kim, Wang felt that he had a chance to work with most of his castmates, but of course his early buddy Tom Paris was always his major relationship. "It started with Paris and Kim, but obviously scenes between them decreased once Paris began dating and then married Torres, so that kind of cut down on our relationship a little bit," said Wang. "But they were still buddies throughout, so that was probably the character that Kim paired up with the most."

Wang regretted not having had more to do with Robert Beltran (Chakotay) on screen, despite the starring roles they both had in 'Timeless,' trying to prevent *Voyager's* accident in the past. "There really wasn't a lot of Chakotay-Kim interaction other than the standard Chakotay asking for a status report; that was about the extent of it," said Wang. "We didn't have any really in-depth conversations. I think Kim and the Doctor had some good scenes together, and Kim and Janeway, and Kim and Kes, and Kim and pretty much everybody, but the Kim-Chakotay relationship I didn't think was ever really fleshed out as much as it could have been."

Wang was also very sorry that Harry and Seven of Nine never got it together, despite a few hints during Seven's early days aboard ship. "I didn't like the fact that they really dropped the ball with Kim and Seven," he said. "At one point Kim was into Seven, and then Seven called his bluff and offered



▲ Kim had plenty of screen time with most of the major characters, but the majority of his scenes were with Tom Paris. They had plenty of adventures together, some fraught and frightening, and others fun and bizarre, such as their time on the holodeck as Captain Proton and Buster Kincaid.



▲ One of Wang's favorite episodes was 'Timeless,' not least because he worked closely with Robert Beltran [Chakotay], something that he regretted did not happen more often. In the episode, Wang played an older version of Kim, who went back in time to stop *Voyager* crashing into an ice planet.

copulation. Kim turned that down – like a fool! – and then all of a sudden the Doc had a crush on Seven. I suggested to the writers that they should have a B storyline where Kim was competing with the Doctor for Seven's attention, which would have been very funny."

Despite the lack of a permanent meaningful romance, over the seven years Wang enjoyed seeing some growth for the character. "Kim got to



▲▲ [Top picture] Kim developed a crush on Seven of Nine shortly after she joined the ship, but Wang was disappointed that the relationship was not taken further. He would have liked to have seen Kim and the Doctor competing for her affections.

▲ [Above] The most prominent show of the final season for Kim was 'Nightingale,' where he commanded an alien ship and learned valuable lessons about what it was like to be a captain.

the point where he was given the responsibility of the bridge whenever Janeway was not there, and he definitely became a much more integral part of the crew," said Wang. "And I changed in that over the seasons I got more and more relaxed with acting in front of a camera, which I initially found very, very unnatural."

#### HOPING FOR ACTION

A salutary lesson for Kim came when he took command of a Kraylor vessel in the final season episode 'Nightingale.' Convinced of his leadership skills, he was forced to admit he didn't know everything, and learned from the experience. "I did like that show," said Wang. "I liked how it turned out at the end, but I would have liked to

have seen Kim in some more action scenes: the three things I always pushed for were action, humor, and getting the girl. They just kept focusing on getting the girl for a while, and they were getting the wrong girl, so I told them, 'OK, that's enough romance for Kim!'"

#### EPISODE HIGHLIGHTS

Wang does have plenty of favorite shows, however. "I enjoyed 'Fair Haven' and 'Spirit Folk' because it was set in an Irish town and I got to wear something different, and going on location was always fun," said Wang. "And I guess 'The Chute' has always been a favorite of mine, along with 'Timeless.' 'Ashes to Ashes' was the big Kim one for Season Six, and 'Memorial' was not bad either – that was when we came across the war memorial that made everybody hallucinate as if they were in the war during the massacre. And the last season there was 'Nightingale.'"

Amazingly, the original plan for this episode was for Kim to leave *Voyager* and head off with the Kraylor. This would have meant Wang not featuring again in the final season until he would have been brought back for the finale. In the end, this strategy was re-thought, especially as the actors' contracts meant that they would have been paid, even if they did not feature in an episode. In other words, Wang would have continued to be paid the same rate, despite not appearing in 14 episodes. "It would have been a great vacation for me," said Wang. "But I don't think the other cast members would have been too happy! That was probably why that never happened."



▲ 'Ashes to Ashes' was a moving episode in which crew member Lyndsay Ballard, killed months earlier, returned to *Voyager* after being revived by the Kobali. Kim, who had developed romantic feelings for her before her death, had to bid farewell to her all over again.

If Wang had left the series for a short time, at least he would not have had to wear the Starfleet uniform, which he found very uncomfortable. This was why he always welcomed shooting on location, as it usually meant a different costume. This was why the two Fair Haven shows were particularly popular. "It was almost like when you went to school and they'd tell you, 'OK, today we're having a field trip; we're going to the zoo,'" said Wang. "That was how it felt, because we got a chance to finally get out of that Starfleet uniform and actually be a little more relaxed. The uniforms were physically uncomfortable because they were only made to fit correctly when you were standing up. You couldn't really lift your arms above shoulder level, which was awkward. There was padding through-out, which I thought was unnecessary, and, also, when you were sitting down it really pulled in the crotch area! Over the years, I must have split 15, or 20 suits in the seat."

#### UNTOLD STORIES

Wang may have had a few disappointments, but he acknowledged it was hard to get to everybody. "They'd talk about ideas and they sounded great, and then all of a sudden they ended up not doing them for one reason or another," said Wang. "They didn't do an evil Kim/regular Kim episode. I think everyone got a chance to do that except for Kim. And it would have been nice to maybe have had an episode where they went back into Kim's childhood and revealed some kind of dark secret, but they didn't do that either."

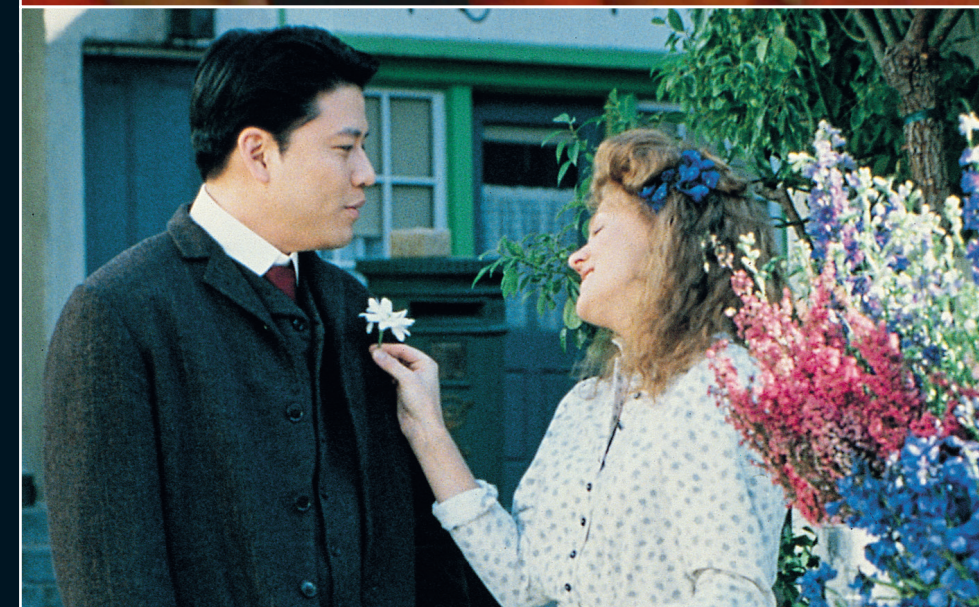
"But then again it was very difficult to do justice to all nine characters. I think nine was probably too many for an ensemble show. If I was running a television show, I would cap it at six – I think that's the ideal number of characters that you can give adequate storylines to throughout a season. Also, nine times out of 10, when people came in to pitch they would pitch storylines for the same characters. They'd pitch a Doctor story, they'd pitch a Seven of Nine story, and that was mainly because those characters were much easier to write for than the human characters. It was just so much easier to write for somebody who was trying to become human – you know, in this episode Seven of Nine discovered how to

socialize, next episode she discovered how to date, and next episode she learned how to have a sense of humor. That's not to say it was not entertaining, but I'm saying, 'Don't always take the easy road; try to take the tough road once in a while, and find a storyline for the humans.'"

#### CATCH-22 STORYLINES

Wang recognized, though, that the Starfleet ideal basically meant that nobody could behave badly. "Yeah, and that's not reality," said Wang. "The closest they got to someone playing the bad side would be Paris, being the rebel and plucked out

▼ Kim did not have much luck with the ladies at the best of the times, but his fortunes appeared to have changed when he was abducted by Taresian women in 'Favorite Son.' Alas, they were only after his genetic material before planning to kill him.



▲ The actors enjoyed filming on location as it usually meant wearing different costumes to the tight Starfleet uniforms. In 'Fair Haven' and 'Spirit Folk' Kim joined the everyday life of the Irish villagers, until the holodeck characters realized that there was something strange about their visitors.



► One of Wang's early favorite shows was 'The Chute,' where not for the last time while in the Delta Quadrant Kim took a beating. In the episode, Kim and Paris were imprisoned by the Akritiri on a brutal penal space station after they were falsely convicted of carrying out a bombing.



of the penal colony to be a member of the crew. But again the cop-out with Paris was, any time they tried a storyline with him they would have to rely on the holodeck. So, once again, I don't think that human characters got the best storylines."

▼ Wang was always pushing to do more action-orientated scenes, and he got his wish in Season Six's 'Memorial,' where the crew believed that they had participated in a traumatic conflict.

**STILL PROMOTIONLESS**

Fans of the show will know that Wang was very disappointed that Harry Kim still only had one pip. He was not soothed by the finale, where he was Captain Kim in an alternate future. "I'm very resentful!" joked Wang. "Twenty-six years in the



future, he should have been an admiral. And once the show ended, the future was changed once again.

"Every convention I've gone to, fans have come up and given me pips as gifts - they felt my pain! And I honestly thought about putting on an extra pip on the uniform during the last episode. I was going to sneak one in there during a scene just to rebel: 'You know what; I'm going to promote myself!' and see who would actually catch that, but I did not get a chance to do it - I was wearing that darned old-age makeup and we had a lot of days of that, and I was so exhausted I literally forgot about my little plan."

**PICKETING THE PRODUCERS**

But Wang was happy to concede that the producers had hoped to cheer him up. He said, "The genesis of it was definitely to make me happy, because I'd been asking forever, 'What's going on here; this is ridiculous!' Tuvok gets promoted, demoted, remoted; Paris gets an automatic field commission from nothing to lieutenant, and then he goes down to ensign and then back up to lieutenant. And this whole time,

who was the person who was been killed, probed, attacked, beaten, more than anybody else? Who deserved a promotion more? Kim! They should have had an episode where I was picketing outside the captain's office with a little sign."

It's true that Kim's only sign of bad behavior was in 'The Disease,' where, against Janeway's orders, he embarked on an affair with a member of an alien race, so this neglect seems unfair. "Yeah, exactly, and what a great choice of words for a title, isn't it?" he laughed. "It sounded horrible! People were asking me, 'So what do you have next? Are there any other episodes that focus on you?' and I'd say, 'Oh, yeah, there's one, oh, what's it called ... I can't remember!' The original title of the episode was 'Alien Love Story,' which sounded a lot better."

**THWARTED AMBITION**

Wang had very much wanted to write and direct on the show, but didn't get the opportunity. "What happened was, I fell through the cracks because there was a change in the regime in the final season," said Wang. "Brannon Braga pretty much gave the reins to Ken (Billler). At one point I had a verbal agreement with Brannon where I would actually try to contribute writing an episode, but once he was gone that didn't happen. Also I asked to direct at the end of Season Five, at the end of Season Six, and the beginning of Season Seven, and I was turned down three times. I know



that I could have turned in a product which they would have been very surprised about."

**HUGELY GRATEFUL**

When the show ended, Wang realized *VOYAGER* had been good for him in arriving at that point in his life. "Overall it was a wonderful opportunity for me to get in front of the camera, and it was a great time developing relationships with the other cast members - I think that was the best part of it," said Wang. "And it was a nice haven for me, seven years of constantly working. That was a lot of time on the timeclock, especially for an Asian American male actor. Kim was a strong role, and who was, most importantly, non-stereotypical. It was definitely the role of a decade for an Asian American male actor, that was for sure, and I happened to be the one who got it!"



◀ Kim had another romance when he fell in love with Derran Tal in 'The Disease,' and he disobeyed orders from Captain Janeway for the first time by refusing to break the relationship off. Wang greatly enjoyed being the focus of this episode, but he wished it had kept its original title of 'Alien Love Story' rather than being called 'The Disease.'

◀ Wang finally got his wish and saw Kim gain his captain's pips in the finale 'Endgame,' although this was only in an alternate future, and he was back down to being an ensign again at the end of the series.

# ON SCREEN

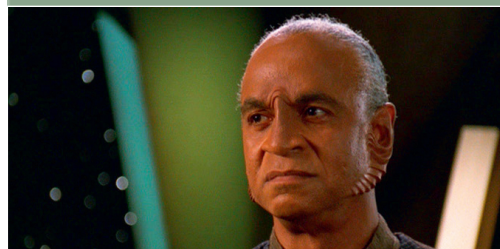


## TRIVIA

Harry Kim was famous for his failed romances. He had a girlfriend named Libby, before he was swept to the Delta Quadrant on the *U.S.S. Voyager*. Despite his continued feelings for Libby, he had a long-held infatuation with Starfleet Academy classmate Lyndsay Ballard [pictured] and he became involved in a love affair with Varro engineer Derran Tal. He also developed crushes on crewmate Megan Delany, a holographic character named Marayna, and even Seven of Nine, shortly after she first came on board.



The lead Kraylor scientist who developed the cloaking device for the *Nightingale* was named Loken and he was played by Ron Glass. The actor is perhaps best known for his role as Detective Ron Harris in *Barney Miller*, which ran from 1975 to 1982. More recently, Glass starred in *Firefly*, another sci-fi series, as Shepherd Derril Book.



The episode 'Nightingale' was directed by LeVar Burton, who of course starred in *THE NEXT GENERATION* as Geordi La Forge. Burton actually holds the record among cast members for directing the most episodes of *STAR TREK*, having helmed 29 installments over three *STAR TREK* series.

- FIRST APPEARANCE: 'NIGHTINGALE' (VOY)
- TV APPEARANCE: STAR TREK: VOYAGER
- DESIGNED BY: Jim Martin

### KEY APPEARANCE

#### STAR TREK: VOYAGER 'Nightingale'

Harry Kim, Seven of Nine and Neelix are scouting for dilithium in the *Delta Flyer II*. Suddenly, they find themselves amid weapons fire when they receive a distress call from a Kraylor ship, which is about to be destroyed.

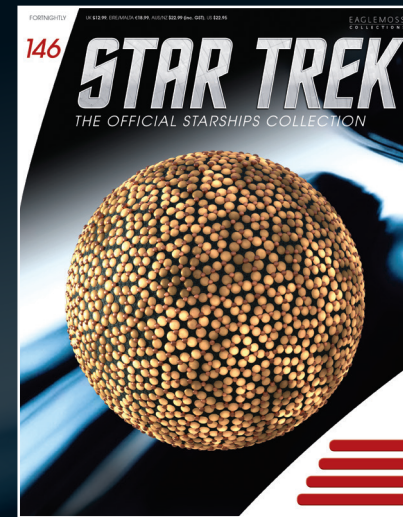
Kim is reluctant to get involved, but at the urging of Neelix he saves the Kraylor vessel. Its grateful occupants say their ship is merely a medical transport and they are trying to return home with vaccines. They ask Kim to command their ship as all the officers on board were killed in the attack, and the survivors are all medical personnel.

Kim renames the Kraylor ship, the *Nightingale*, but his first command does not go well. First, Kim micromanages the crew, and when it comes under attack again, he realizes he has been deceived. The ship is actually equipped with a prototype cloaking device, and the crew are engineers and scientists who invented it. They want to use the cloak to get supplies to their homeworld, which has been under a blockade by the Annari for three years.

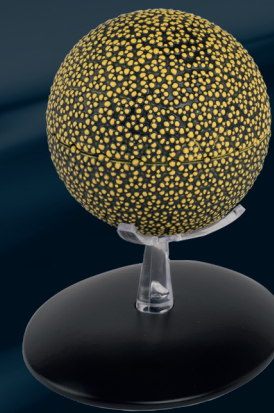
Kim knows he has broken the Prime Directive, and realizes that leadership is much harder than he expected. Nevertheless, he tries to lead the ship safely back to the Kraylor homeworld.

COMING IN ISSUE 146

# FESARIUS



EVERY TWO WEEKS AT YOUR RETAILER



## Inside your magazine

- In-depth profile of the *Fesarius*, a huge 23rd-century vessel described as the flagship of the First Federation and operated by Commander Balok
- How the *Fesarius*, first designed by Matt Jefferies, was updated as a CG model for the remastered edition of the episode 'The Corbomite Maneuver'
- A look back on the *STAR TREK* work of Matt Jefferies, the art director throughout *THE ORIGINAL SERIES*

## eaglemoss.com/shop

### The place to order your STAR TREK ships

- Use the special **INTRODUCTORY DISCOUNT CODE STAR10** to get **10% OFF** your first online order
- Sign up for the **NEWSLETTER** to be the first to hear about **EXCLUSIVE ONLINE OFFERS**
- All orders are delivered direct to your door. **ANY DAMAGES REPLACED - NO QUESTIONS ASKED!**



#### BINDERS

Order specially-designed binders to store your magazines. There are two designs to choose from.



#### BACK ISSUES

Complete your collection by ordering any missing issues, and sign up to the newsletter to be the first to know when rare items come back into stock.



eaglemoss.com/shop

# STAR TREK™

