

FORTNIGHTLY

UK £10.99, EIRE/MALTA €16.99, AUS/NZ \$20.99 (inc. GST), US \$21.95

EAGLEMOSS
COLLECTIONS

99

STAR TREK™

THE OFFICIAL STARSHIPS COLLECTION



ASSIMILATED
ARCTIC ONE

OPERATED BY: BORG

LAUNCHED: 22nd C

LENGTH: 80 METERS

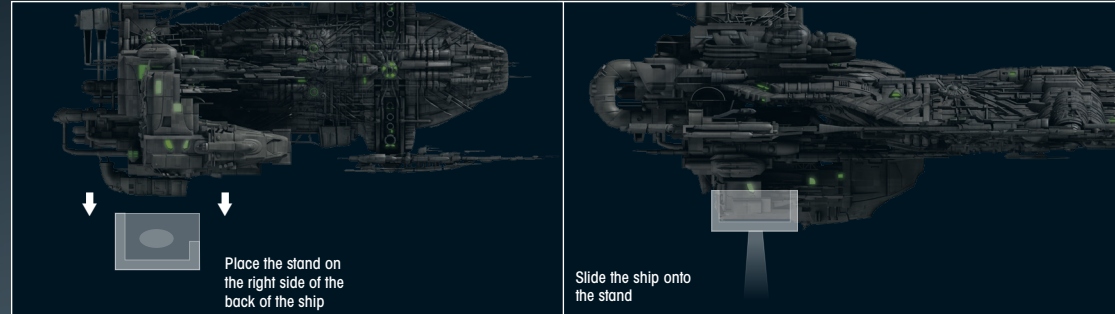
TOP SPEED: WARP 4.98

ASSIMILATED ARCTIC ONE

Contents

- P04: ASSIMILATED *ARCTIC ONE*
- P10: DESIGNING THE SHIP
- P12: HOW THE BORG ENDED UP ON *ENTERPRISE*
- P18: ON SCREEN

Stand assembly:



ASSMILATED ARCTIC ONE SPECIFICATION



OPERATED BY:	THE BORG
IN OPERATION:	22nd CENTURY
LENGTH:	80 METERS (APPROX.)
TOP SPEED:	WARP 4.98
CREW:	29 (APPROX.)
WEAPONRY:	PROTON-BASED ENERGY BEAM, CUTTING BEAM
DESTROYED:	2153

ORDER ONLINE

Order binders, missing issues or other Eaglemoss products at:

www.mycollectionshop.com

www.mycollectionshop.com

EAGLEMOSS COLLECTIONS

Eaglemoss Publications Ltd. 2017
1st Floor, Kensington Village, Avonmore Road, W14 8TS, London, UK. All rights reserved.

CUSTOMER SERVICES:
www.startrek-starships.com

UK: 0344 493 6091
startrek-ship@eaglemoss-service.com

Australia: (03) 9872 4000
bissett@bissettmags.com.au

New Zealand: (09) 308 2871
Fax: (09) 302 7661
subs@ndc.co.nz

South Africa: (011) 265 4307
service@jacklin.co.za

Malaysia: (03) 8020 7112
sales@allscript.com

Singapore: (65) 6287 7090
sales@allscript.com

OVERSEAS BACK ISSUES
Place your order with your local magazine retailer.

Recommended age 14+.
Warning! Collectable figurines.
Not designed or intended for play by children.
Do not dispose of in domestic waste.

Development Director:
Maggie Calmels

STAR TREK – The Official Starships Collection is published fortnightly.

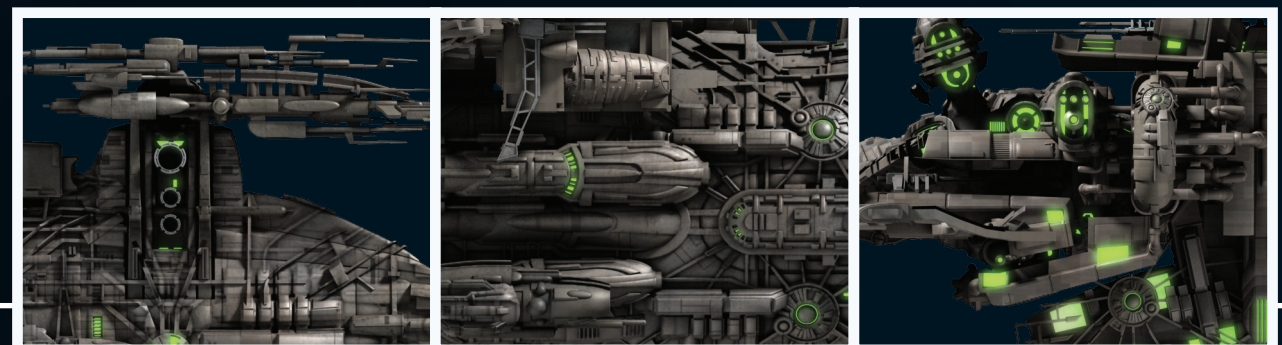
DON'T MISS AN ISSUE: place a regular order with your magazine retailer.

SUBSCRIBE and receive exclusive free gifts – www.startrek-starships.com
Call 0344 493 6091
Post the subscription form included with issues 1 to 5

BACK ISSUES
To order back issues: Order online at www.startrek-starships.com or call 0344 493 6091

UK distributor: COMAG Magazine Marketing

Find us on Facebook
Join us online for competitions, updates and more!





▲ The assimilated *Arctic One* was bristling with Borg technology that had been built up over the original hull. Under Borg control, it continued to evolve rapidly, becoming larger, faster and more deadly.

ASSIMILATED ARCTIC ONE

An Earth research vessel designed for polar conditions was modified by Borg drones in the 22nd century.

The assimilated *Arctic One* was an Earth ship from the 22nd century that had been heavily modified and enhanced by the Borg with components typical of their technology.

The vessel began life as a United Earth research vessel that was designed to operate in extreme cold weather environments. It was roughly 80 meters in length, and was outfitted with a warp engine that could propel it to a top speed of warp 1.4. It could set down on a planetary surface and was equipped with landing skis, rather than landing pads, enabling it to touch down on snowy

DATA FEED

The Borg modified most of the primary systems on *Arctic One* as well as fitting hull plating, enhancing the engines and fitting weapon nodes.



ground. It was protected by polarized hull plating, but featured no weapons.

After it was taken over by Borg drones, the *Arctic One* was upgraded in a number of ways as they continued to add technology to it. In appearance, the ship went from having a smooth green-colored hull to one that was dark gray and covered with Borg systems. It was also dotted with green energy signatures throughout the hull, a familiar sight on other Borg vessels.

While it still retained the shape of the *Arctic One* under its new skin, various Borg systems and infrastructure had been added to its hull. These included weapons that had been fitted to where the front skis had been, and they fired some kind of proton burst. It was also armed with a cutting beam that could be used to slice components off other vessels, so they could be adapted and added to their vessel.

ACCELERATED ADVANCEMENT

Perhaps most impressively, the Borg drones had enhanced the warp engine with systems that were built up over the rear of the ship. It went from having a top speed of warp 1.4 to warp 3.9. Less than 12 hours later, the ship was able to reach warp 4.98, doubling its top speed. It was clear that the Borg were constantly evolving the ship, making it faster and more deadly by the hour.

The inside of the *Arctic One* was also being changed to suit the drones, with many of the interfaces replaced with cybernetic circuits. The lighting was dimmed and Borg alcoves had been installed to allow the drones to regenerate.

In 2153, *Arctic One* was used by a group of Earth scientists to investigate a crash site in the Arctic Circle. Unbeknownst to them, it turned out to be the wreckage from parts of the Borg sphere

◀ Before being taken over by the Borg, *Arctic One* was the name given to a transport and research vessel used by an A-6 excavation team in the Arctic Circle. They were set up by the Earth Sciences Institute, and neither they nor *Arctic One* were part of Starfleet.

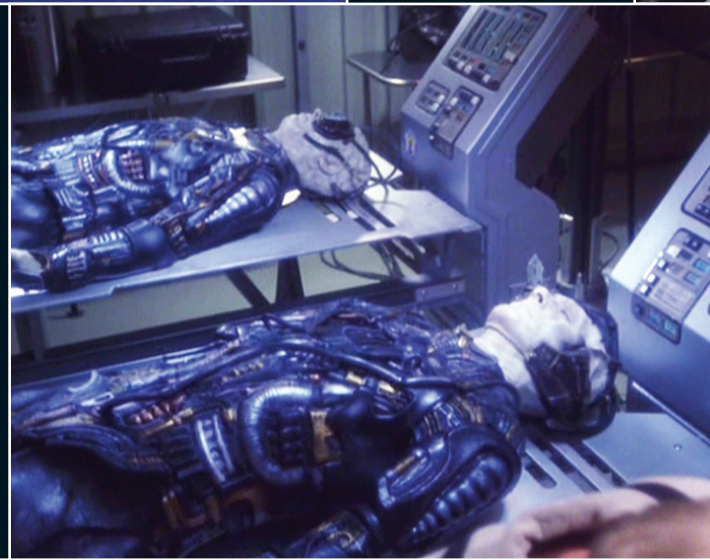


◀ After finding the debris of a ship and the bodies of cybernetic beings in the Arctic Circle, the scientists set up more elaborate facilities to continue their study of these unusual findings.

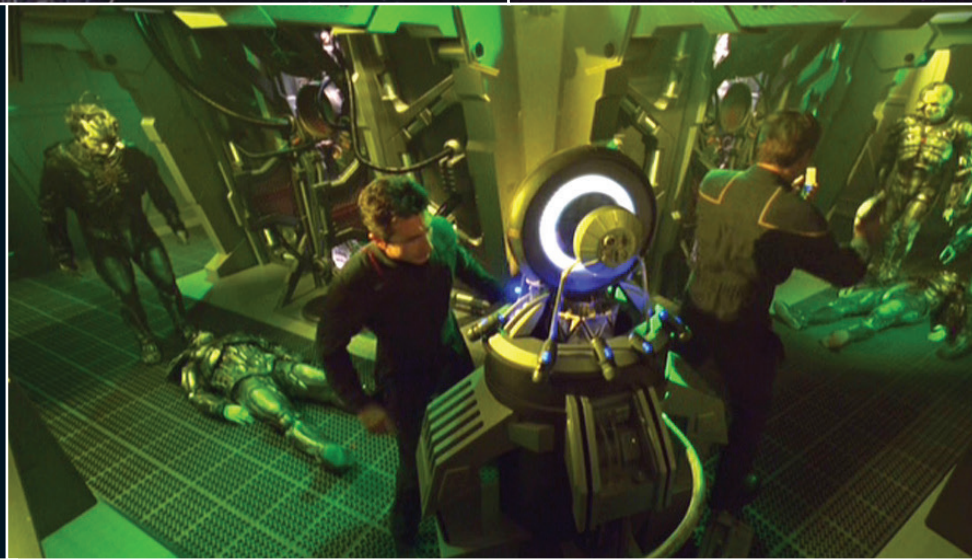
▶ *Enterprise* NX-01 found the assimilated *Arctic One* attacking a Tarkalean freighter. It was using a cutting beam to remove systems from the freighter, so they could be used on their own ship.



▶ Two frozen Borg drones were brought inside a laboratory to thaw out. This caused the nanoprobes within the drones to reactivate and repair their damaged tissue. One of the drones awoke and immediately began to assimilate members of the excavation team.



▶ With *Enterprise* defenseless, Archer and Reed beamed over to the assimilated vessel. Using enhanced phase pistols, they fought their way to the ship's EPS manifold and set explosive charges around it. Just as the drones adapted to their weapons, Archer and Reed beamed back to *Enterprise* and detonated the charges.



▲ The Tarkalean drones that had been taken aboard *Enterprise* sabotaged the ship, causing it to lose power to its engines and weapons. Once *Enterprise* was a sitting duck, the assimilated *Arctic One* moved in and fired a proton-based energy weapon at it. Although not that powerful, it would have eventually destroyed *Enterprise*.

▲ During the excavation of the crash site in the Arctic, the scientists found Borg drones frozen in the ice. They had been buried there for over a century after the Borg sphere they had been on was shot down by the *U.S.S. Enterprise* NCC-1701-E in 2063.

that had been destroyed by the *U.S.S. Enterprise* NCC-1701-E when it travelled back in time to 2063. Amid the fragments of the sphere, the scientists found two Borg drones that were intact but frozen solid. Unaware of what they were dealing with, the scientists thawed out the drones. Before long, one of them awoke and immediately set about assimilating the research scientists. Working together, the newly created drones modified the *Arctic One* and left Earth.

Enterprise NX-01 was called upon to hunt down the Borg vessel as tracking stations had located it near the Starfleet vessel's position. *Enterprise* soon received a distress call from a Tarkalean freighter, which was being sliced apart by a cutting beam from the assimilated *Arctic One*. *Enterprise* detected nine erratic human biosigns on board,

but when the crew tried to intervene, their ship was hit by weapons fire. *Enterprise* disabled the weapon on the assimilated ship with relative ease, forcing it to leave at warp speed, while Captain Archer and his crew remained to treat two Tarkalean survivors.

SYSTEM SABOTAGE

The Tarkaleans had already been infected with nanoprobes, and once on board *Enterprise* they attacked the medical staff before making modifications to the ship's warp plasma regulators.

When *Enterprise* had caught up with the *Arctic One* again, the assimilated vessel's mass had increased by three per cent, indicating the rate at which it was evolving. It dropped out of warp and sent a transmission that caused the cybernetic

circuits that the Tarkalean drones had installed to come online. This disrupted *Enterprise*'s main power and disabled their weapons.

With no way to fight back or retreat, Archer and Lt. Reed beamed over to the Borg vessel to try and disable it from within. They set explosives around the EPS manifold and detonated them after returning to *Enterprise*. At the same time, Commander Tucker managed to restore power, and *Enterprise* fired torpedoes and phase cannons at the Borg vessel's warp core, blowing it to pieces.

In the aftermath, it was discovered that the assimilated ship had transmitted spatial coordinates showing how to find Earth. It would take at least 200 years for the subspace message to reach the Delta Quadrant – or some time in the 24th century.

DATA FEED

Dr. Moninger was part of the A-6 excavation team that set up a medical lab where the two frozen Borg drones were thawed out. When he discovered that nanotechnological devices in their blood were active and repairing their bodies, he wanted to continue the study in a more controlled environment, but he was overruled. His superiors should have listened to him, as chronologically he became the first human ever to be assimilated.



BEATING THE BORG

The assimilated *Arctic One's* weapons were not nearly as powerful as the armaments found on other Borg vessels. Nevertheless, after *Enterprise NX-01's* systems had been sabotaged by the Tarkalean drones, it became a sitting duck. Following the first attack from the assimilated vessel, *Enterprise's* hull plating was reduced to 81 per cent. It was only a matter of time before the Starfleet ship would be destroyed, if the attack continued.

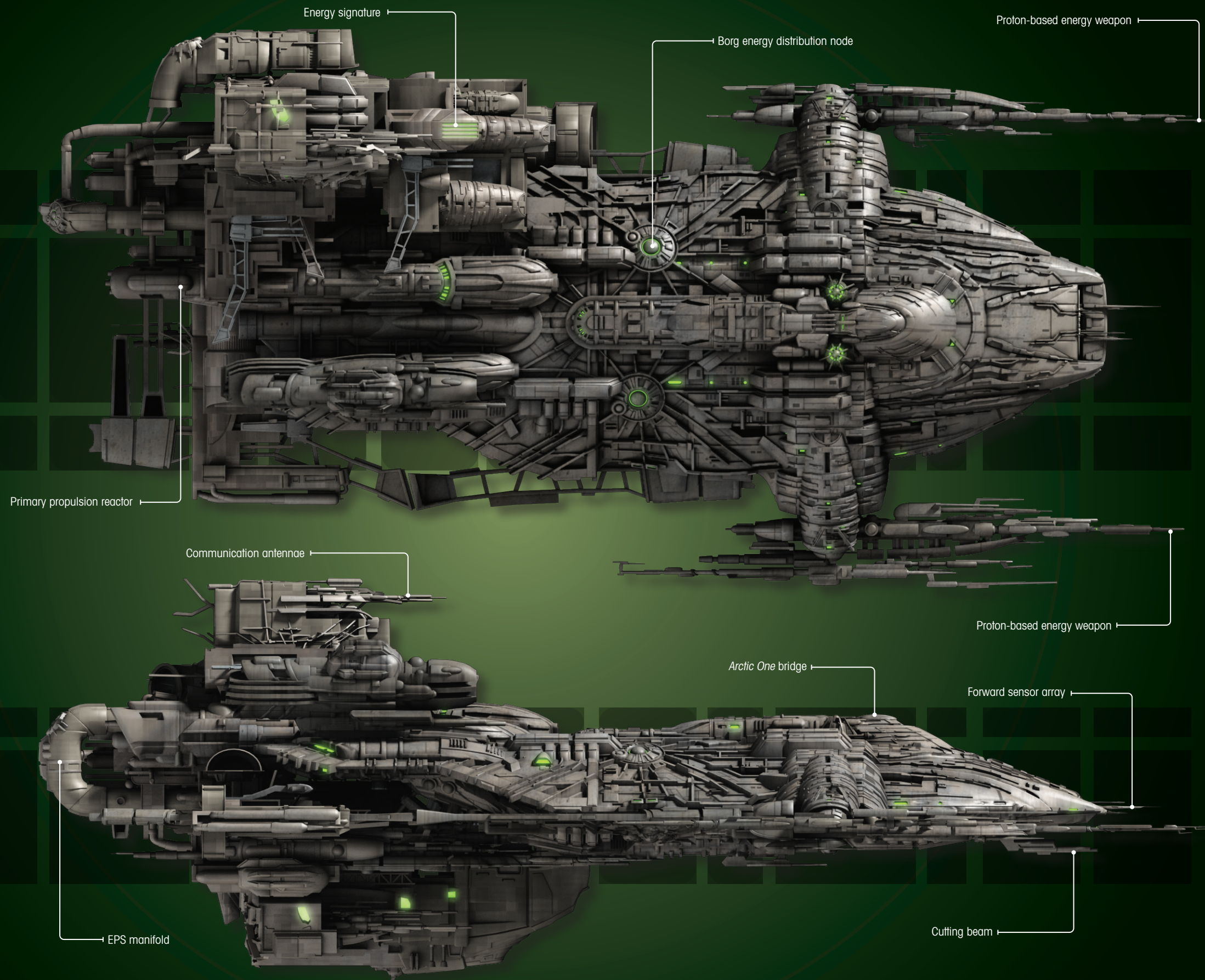
Captain Archer and Lt. Reed took the daring decision to beam over to the assimilated ship in order to stop the attack. Armed with phase pistols that had been upgraded to level 10, they managed to fight their way to the Borg ship's EPS manifold. They had just set all the explosives when the drones adapted to their weapons, and they beamed off the ship as they were about to be assimilated.

Back on *Enterprise*, Reed remotely detonated the devices, causing massive damage to the Borg ship. It did not come a moment too soon, as *Enterprise* had lost all hull plating by this point and the Borg had begun to cut into its hull on E deck.

Meanwhile, Commander Tucker had removed the Borg circuits in *Enterprise's* plasma regulators and restored weaponry. Before the Borg could restore systems on their ship, *Enterprise* fired five torpedoes and a blast from the phase cannon at their warp core, blowing the assimilated ship to smithereens.



▲ Once Archer and Reed had taken out the EPS manifold on the assimilated *Arctic One* with explosives, *Enterprise* was able to destroy the rest of the ship with its newly restored weaponry.



EXPANDING CREW

After the attack on the Tarkalean freighter, T'Pol noted that there were now 29 life forms on the Borg ship, presumably after the drones had assimilated members of the A-6 excavation team and the freighter.

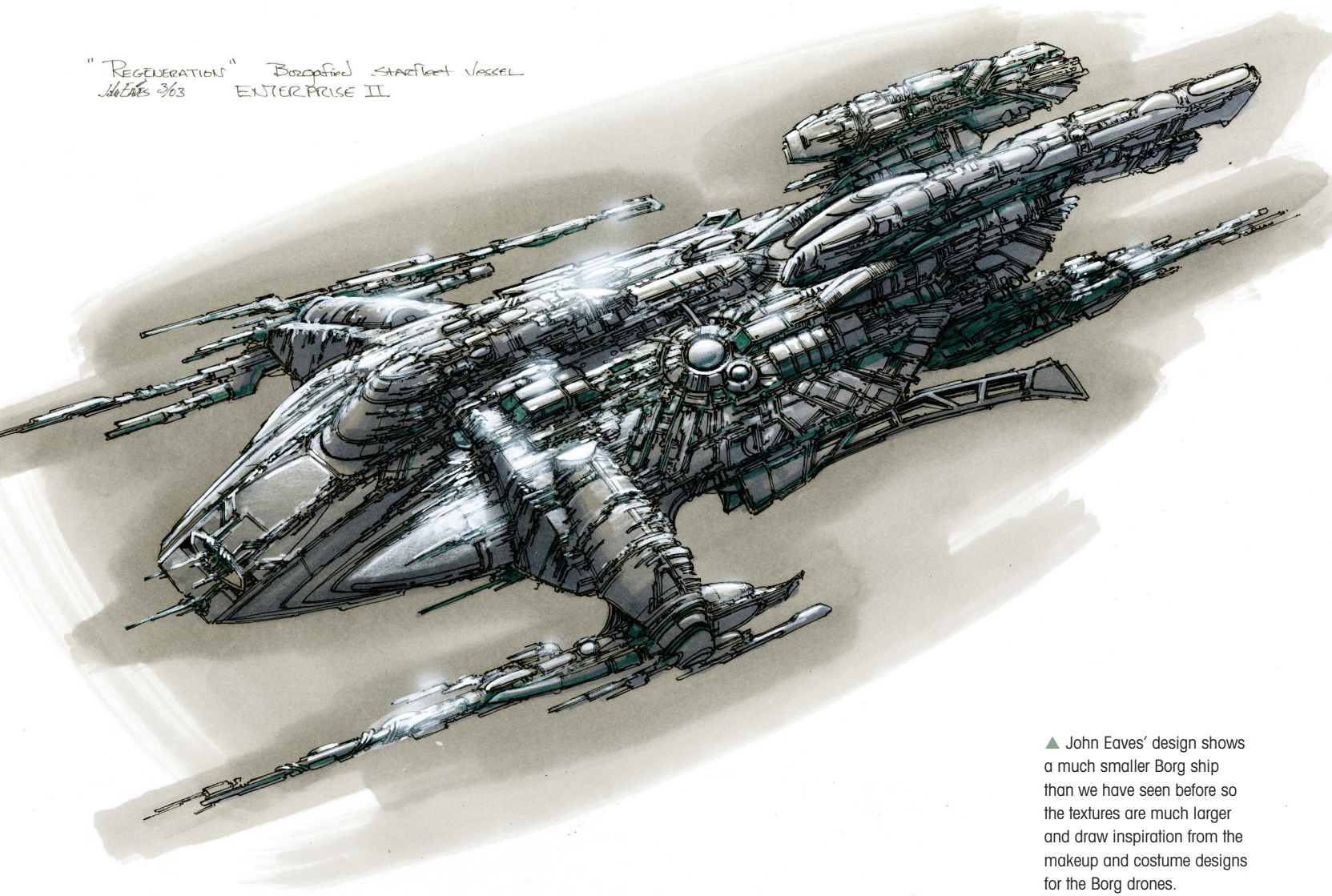
SURVIVING SHIPS

In an alternate timeline, two *Arctic One*-type ships were part of a fleet led by *Enterprise NX-01* to the Ceti Alpha system, following the destruction of Earth by the Xindi superweapon.

WRITERS' INTENTION

According to Mike Sussman and Phyllis Strong, the writers of *Regeneration*, the reason why the Borgified *Arctic One* kept getting larger was that eventually it would have evolved into a Borg Sphere. In the end, there was not enough time to convey this information in dialogue in the finished episode.

"REGENERATION" Borgified Starfleet Vessel
 11/5/03 363 ENTERPRISE II



▲ John Eaves' design shows a much smaller Borg ship than we have seen before so the textures are much larger and draw inspiration from the makeup and costume designs for the Borg drones.

DESIGNING THE ARCTIC EXPLORER

John Eaves' task was to design ship that looked at home in the snow, and that could be assimilated by the drones who were fleeing Earth.

From the beginning the Arctic Explorer involved creating two distinct designs: the Starfleet version that visited Earth's poles and a version that had been assimilated by the Borg, which Archer would pursue across space.

As John Eaves remembers, he began by sketching out the unmodified Starfleet version. "The

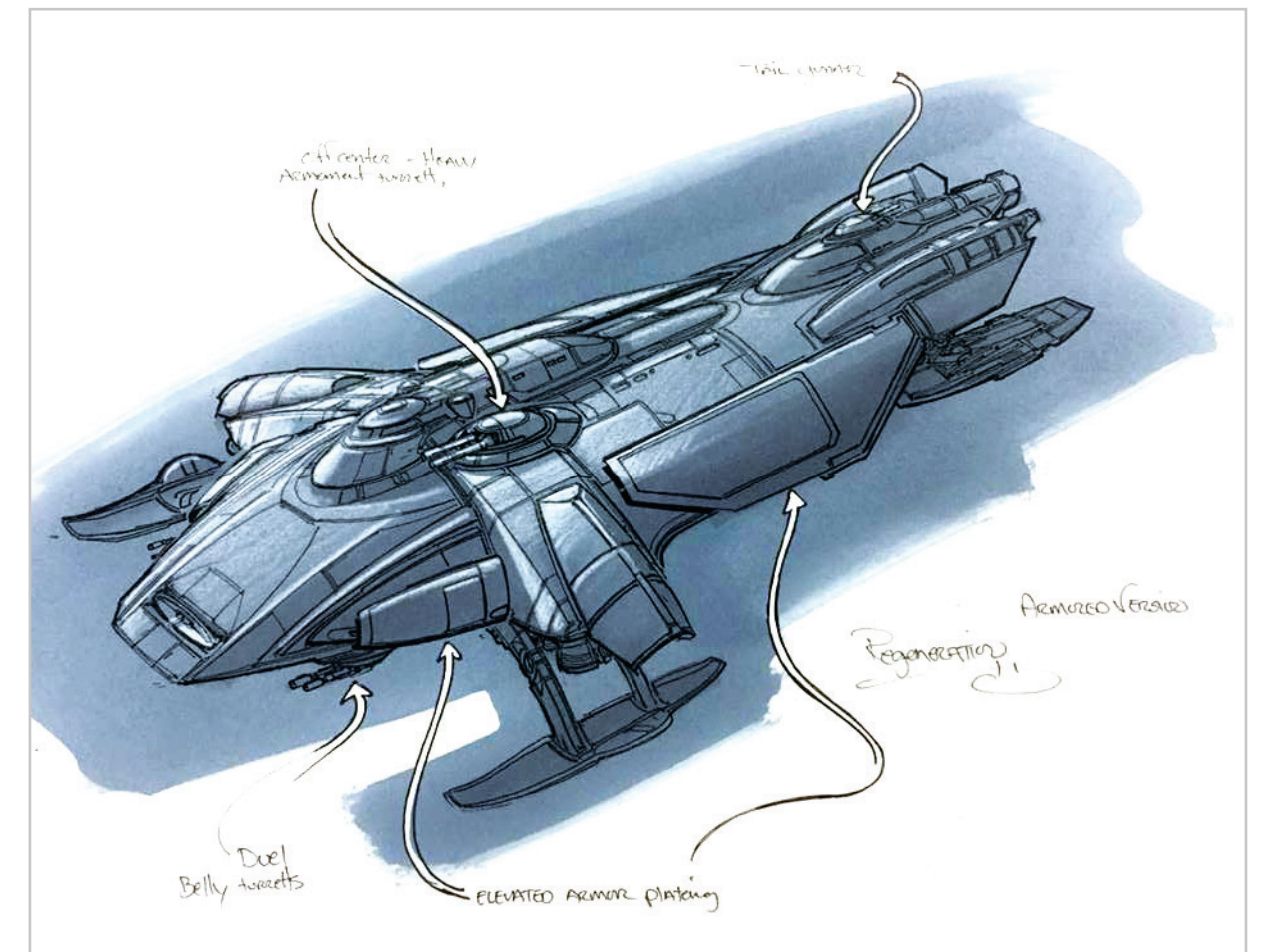
ship started off as a transport to get from the Starfleet base to the site," he says. "They obviously had a team of these ships because we designated a patch for the side of it. They were doing all kinds of Arctic exploration. I decided it would be a mix of a snow plough, a helicopter and a big arctic exploring vehicle. Basically a combination of things

that I thought would be appropriate for that job, yet put in the Starfleet era. Then as it gets taken over most of the changes take place in the back of the ship."

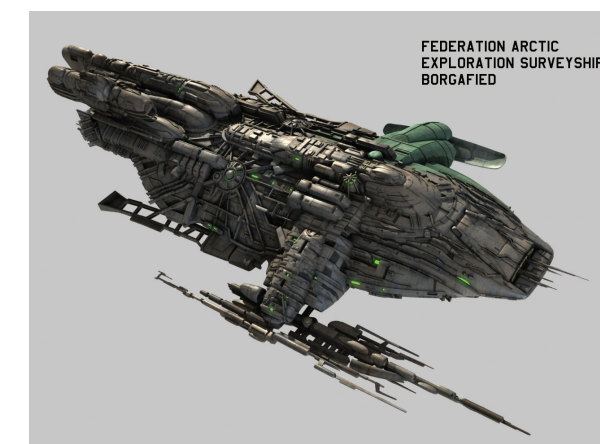
At the time, Eaves says he had been designing a lot of ships that were taller than they were wide and he wanted this one to be "more horizontal". It was also important that it looked suited to landing in the arctic. "We all agreed it needed to look like a ship that had a purpose rather than something odd. It was designed for a softer, fragile landscape

like snow or ice and the script called for it to have landing gear."

Eaves remembers being inspired by a vehicle he'd seen in a copy of *The Guinness Book Of World Records*. "It was the longest vehicle in the world; it had these segmented pieces and it was built for the Arctic," he recalls. "It used to be parked in Yuma Arizona. It really wasn't a visual inspiration but I remember seeing that and thinking it would be kind of cool to try and incorporate elements of it. I also had a matchbox snow plough when I was



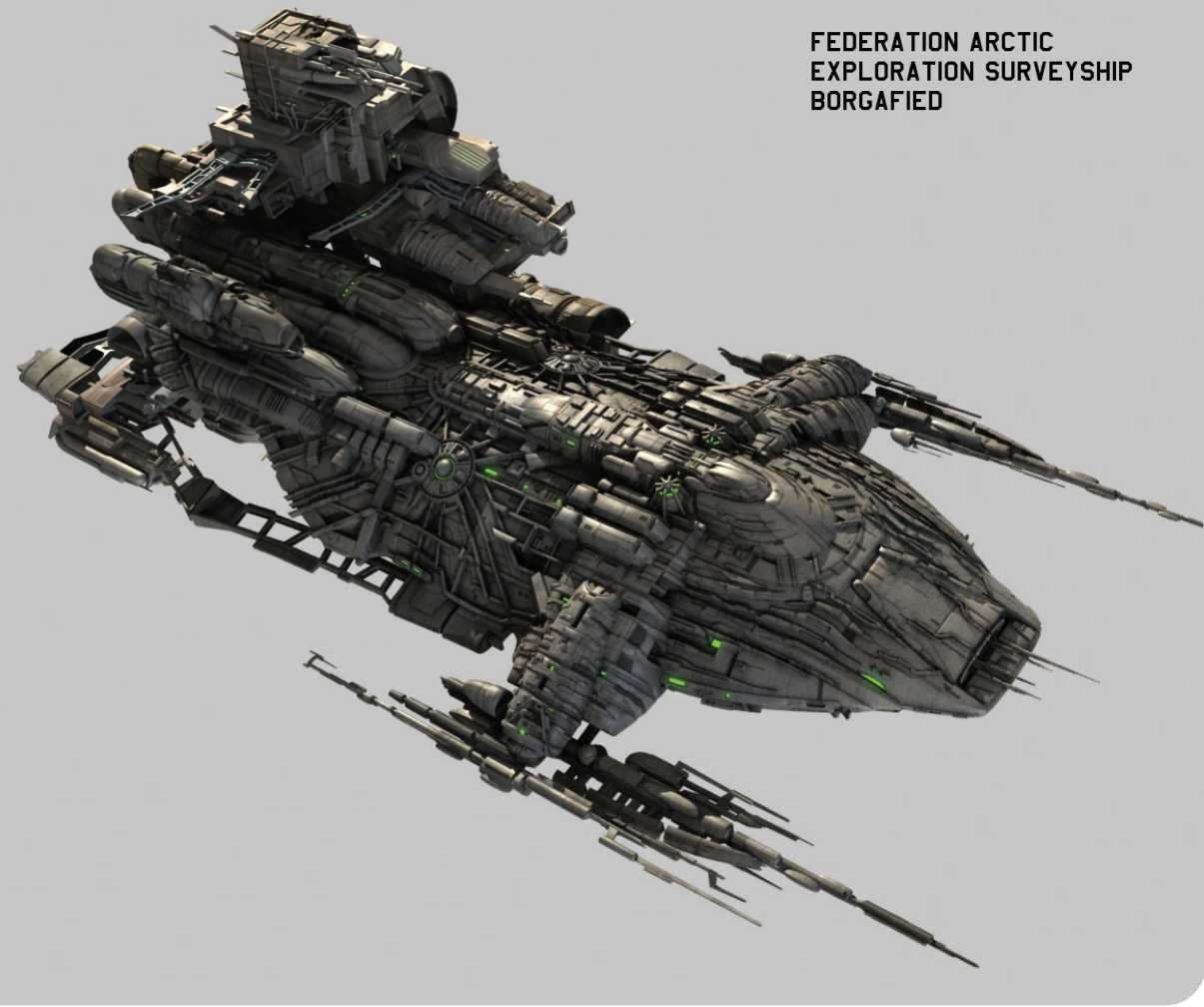
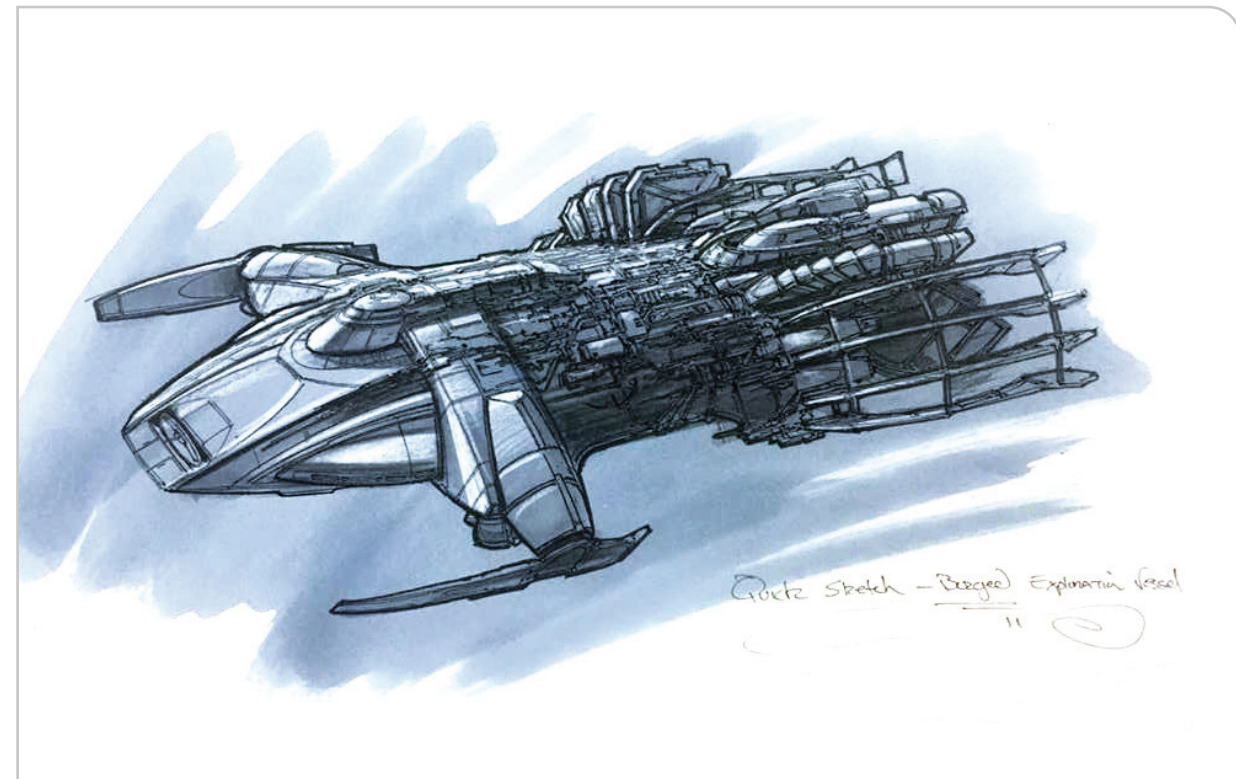
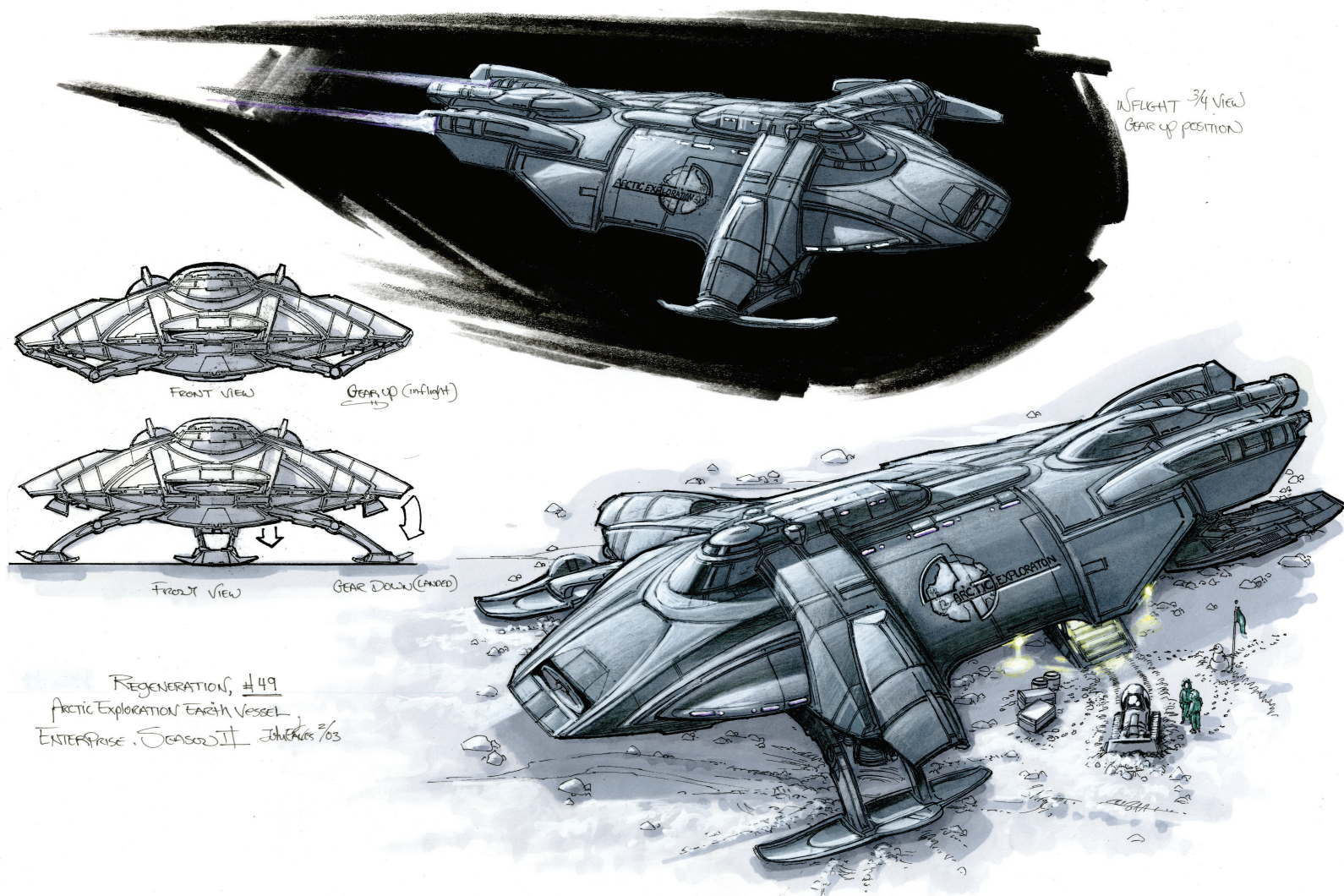
► The unmodified version of the ship was something we rarely saw on *STAR TREK*: a small transport. Eaves remembers that at one point it was armored, but the producers decided that this wasn't a good idea.



► During the course of the episode the ship is assimilated by the Borg and turns into something quite different.

a kid. It was a little red thing with white treads and I tried to incorporate a little bit of that into the design. So it has a little snowmobile, and a little bit of the old DC3 with the Arctic skids on it. It was a mix of fake and real.

"Giving it the ski attachments sold the point that it was an Arctic ship. We're instantly familiar with skis and skids - anything else wouldn't work. I did a drawing where it's making the discovery in the snow with a little campsite and stuff, so that was the very first phase. Once that got approved, then we took the ship in the Borgified world."



◀ Eaves supplied the VFX artists at Eden co with drawings showing the Explorer in various stages of assimilation. They worked out the detail and created two different versions in CG.

When it came to modifying the design as it was assimilated, Eaves says it was important that the audience could see it was still the same ship so he just applied the Borg texture to the front, while the rest of the ship underwent a more radical transformation. "The back grows into all kinds of crazy configurations while the front makes it possible to know what ship you're looking at."

After his work on *FIRST CONTACT* Eaves was very familiar with Borg design, but this was a much smaller ship than we had seen before, so this time he drew inspiration from Michael Westmore's design for the Borg makeup. "I figured it's a smaller scale so I'll go with the smaller kind of Borg detail. On the hull of the ship you can see this little tiny circular area. That's like the implant the Borg technology spread from, kind of like the Borg

implant that came out of Picard's face when he's in the dream. I just took that as the inspiration for the ship. It had all the little intricate pieces."

During the show the ship becomes more and more assimilated and Eaves recalls producing a series of drawings that show extreme the Borg detail could be. "I think I did four variations," he says. "Some were too light and some were too busy, so we went with one in the middle that had a good sense of Borg growth without being overwhelming."

"We provided drawings for two stages of Borgification. I did a light version and then this version and we had a couple that went way beyond this. The back was getting to be enormous and out of proportion where it was definitely going to grow into something bigger..."

▲ Eaves began the process by designing the unmodified version of the Arctic Explorer. This drawing, which shows it on the ground with a small campsite around it, was the one that was approved by the producers.

◀ By the end of the episode the back of the Explorer had become much larger as the Borg 'grew' more technology.



BORG BEGINNINGS

When the Borg appeared on ENTERPRISE it was like seeing them for the first time, and that made them terrifying.

I F THERE WAS ONE RACE no-one expected to see on *STAR TREK: ENTERPRISE* it was the Borg. "People have often wondered why we were revisiting the Borg in *Regeneration*" says Mike Sussman, who co-wrote the story. "The answer is we simply wanted to have a sequel to *FIRST CONTACT* and a prequel to *Q Who?*. The episode was pretty well received. I think it is because it made the Borg scary again. One of the most terrifying things in a horror story is to have the audience know more than the characters do. For the longest time with the Borg in *STAR TREK* we only knew as much as Picard and Janeway and everybody else did. With *Regeneration* we

reversed that. Now the audience was able to shout at Archer and his people, 'Don't go into that ship!' 'Don't take those assimilated aliens into your sickbay because it's not going to end well.'"

According to Sussman, no one on the *ENTERPRISE* writing staff had ever talked about doing a Borg story. In fact the idea had only come to him after he had been browsing a message board. "One day someone mentioned in a thread something about a sequel to *FIRST CONTACT* and it kind of stuck in my head. Then there was a moment during season two where we were running low on stories. My then writing

▲ The episode *Regeneration* begins with a group of Arctic explorers finding a pair of Borg drones in the ice. They make the mistake of thawing them out and before long they are assimilated.

partner Phyllis Strong and I got called into Brannon's office and he said, 'What are you going to write next? I had this Borg idea at the back of my head. At some point, some kind of debris would have survived the destruction of the Borg Sphere in *FIRST CONTACT* and somehow that technology had been appropriated by someone who worked on designing the warp five engine. That premise was kind of half baked but Brannon did latch onto the idea of the surviving debris. He then said 'What if it's *The Thing*? The Arctic element came up right there along with some Borg drones.'

BACK FROM THE DEAD

The idea wasn't popular with everyone. As word went around, questions started being asked about why the Borg were being resurrected. "I remember people laughing because they put all the Borg stuff into long term storage because they didn't think they were going to need it for *ENTERPRISE*. For me it was exciting. As a fan in the early nineties I'd started to write a script that was going to be a sequel to *Q Who?* It was probably terrible but here I was years later about to start writing my third episode with the Borg in it. This was also a much smaller story than others had been. Basically we had a couple of Borg who were just trying to get away and go home."

The writing staff decided they didn't want to simply do the story of the Borg waking up on Earth and immediately trying to assimilate everybody. After some brainstorming Braga came up with the idea of having drones that were disconnected from the hive mind, whose first instinct would be to reconnect with the collective. "That is why they take over the ship and Borgify a couple of people and head off into deep space," says Sussman. "Once I had that logic the story kind of flowed from there. I finally got to do the idea that I had come up with back in 1989, which was seeing a ship get fully assimilated and what that would look like. In my original idea I imagined that the Borg would annex a solar system. They would assimilate the entire planet and any ships in the area so the *Enterprise-D* would run into an assimilated *Galaxy-class* ship that would be part cube. I loved that idea. Also we would know the people

► Executive producer Brannon Braga suggested that the first act concentrated on new characters and that Archer and his crew only got involved once the Borg had left Earth.



► In order to connect the events that were happening at the Arctic to the ongoing story, the writers had Admiral Forrest respond to losing contact with the exploration team. He then contacts Archer and sends him to intercept the assimilated vessel.





who had been Borgified on that ship. The idea I had, which I thought would have been fun to reveal, was that Borg ships are not actually built in some complex – they are actually assimilated and then become cubes or spheres. I wanted to see that Arctic transport vessel become a sphere in the course of the episode. That idea was rejected but we do see the ship grow and get bigger. It gets squarer. Maybe they would also find another ship, which they would add to it and it would get even bigger. For all the adventures we'd seen with the Borg we hadn't seen that before."

Sussman determined the episode would be presented as half sequel, half prequel and would feed into the existing Borg chronology and mythology. Not only from *Q Who?* but from *The Neutral Zone* where the first Borg footprint was seen.

"Initially the end of act one of *Regeneration* was going to be Forrest and the Starfleet people showing up after they get a distress call. They get to the Arctic and there's a giant scooped out area" says Sussman. "Rick Berman, I believe, sent a note saying they thought only a cube would be capable of that level of destruction. So that notion went away. But I was keen not to just do

an homage to the previous episodes but actually show how the Borg operate and this is why they do what they do. The way *Regeneration* ended with that transmission to the Delta Quadrant was me trying to set up the reason why they showed up at the end of TNG season one. They were responding to that call they had received hundreds of years before."

When it came to the actual episode Braga made the decision to depart from the usual structure. "He basically said, 'Let's not see our people at all in the first act,'" recalls Sussman.



▲ The crew of the *Enterprise* know nothing about the Borg, so when they arrive on the ship they are as terrifying as the first time we saw them.

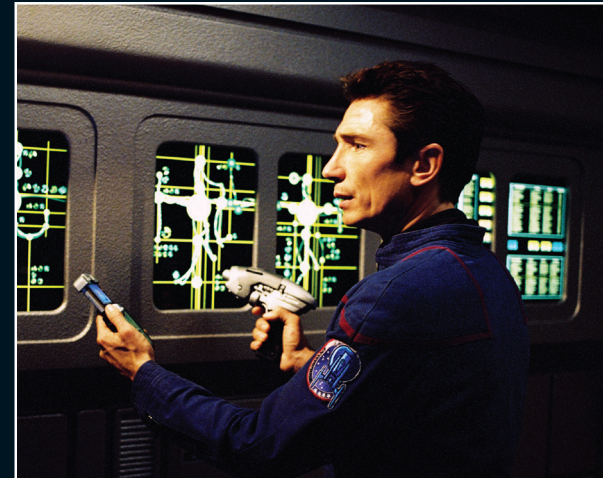
▼ *Regeneration* was directed by David Livingston, who gave everything a fast pace, meaning the writers had to add more scenes.

"Let's just do a horror show in the snow with these people we've never met before. We had some connective tissue with Admiral Forrest showing up at the end. But Brannon really wanted to do the proverbial 'cold opening' when you're on Earth but you're not at all sure why until you see the Borg under the ice. The audience were far ahead of the characters but in a good way, a terrifying sort of way."

Sussman was keen to show the effect of dealing with the Borg on Archer. "We saw Picard killing his former crewmembers. The character played by Alfie Woodward was kind of freaked out by that as the audience must have been, because coming from Picard, the humanist, it was kind of shocking," says Sussman. "But when we meet Seven of Nine, we realize that the Borg can be rehabilitated. So the whole episode Archer is on that quest – to get the researchers and the Tarkaleans back. He has a very moralistic approach: we help out people in need and we're not going to give up on them. Meanwhile T'Pol has a much more nuanced realpolitik view of the Borg and tells him that they need to kill them. When Archer gives the order to blow up the ship, including the people he was trying to save, that was a good moment for his character. It was his arc and emotional journey through the episode."

MORAL DILEMMA

According to Sussman this wasn't case of trying to make Archer tougher, rather it was about raising the stakes and taking the character into new and more uncomfortable places. "Up to that point Archer had fired at ships but it wasn't clear if he had actually killed anyone," explains Sussman. "Now he's facing of case of 'are you going to kill these innocent people who have been forced to attack your ship against their will?' It's an interesting, tough dilemma for any commander. A similar situation occurs at the beginning of *STAR TREK* in *Where No Man Has Gone Before* where Kirk wants to save his friend Gary Mitchell but Spock believes the only answer to kill him. It's a real sci-fi premise but that was the fun of it. It felt like a very *STAR TREK* conflict for Archer and T'Pol to have and the audience knew that she was right."



◀ The partially assimilated Tarkaleans plant a virus on *Enterprise*. This prompted a discussion about whether the Borg had always counted on Archer bringing the Tarkaleans onboard.

◀ The interior of the assimilated *Explorer* featured scenery that had been regularly used on *STAR TREK: VOYAGER* but that had been put in storage

◀ The idea was that the Borg drones were "only trying to get home" so they could reconnect with the Collective. In Sussman's mind the signal they sent to the Delta Quadrant was directly responsible for the Borg's arrival in TNG's first season.

ON SCREEN



TRIVIA

The actress who played Rooney [pictured below], the researcher with the A-6 excavation team, was Bonita Friedericy, wife to Dr. Phlox actor John Billingsley. On the set, Friedericy was known as "Borg baby" because at 5ft 3ins tall she was much smaller than most Borg actors. To play the assimilated Rooney, Friedericy wore the same Borg costume that Roxann Dawson [B'Elanna Torres] had in the VOYAGER two-part episode *Unimatrix Zero*.



As many as three *Arctic One*-type ships were part of the fleet that welcomed *Enterprise* NX-01 home at the end of the episode *Storm Front, Part II*. The same type of ship was also seen in *Demons*, although the hulls were colored gray rather than green.



Among the debris seen in the Arctic Circle at the beginning of *Regeneration*, was a filming model of the U.S.S. *Enterprise* NCC-1701-E's saucer section, which had originally been created for *STAR TREK: NEMESIS*. The simulated snow was in fact salt that had previously been used for a Rura Penthe set in the episode *Judgment*.

FIRST APPEARANCE:	REGENERATION (ENT)
TV APPEARANCE:	STAR TREK: ENTERPRISE
DESIGNED BY:	John Eaves

KEY APPEARANCES

STAR TREK: ENTERPRISE Regeneration

An *Arctic One* transport carrying a scientific research team lands in the Arctic Circle to investigate debris found there. The scientists discover an alien ship nearly a century old buried in the ice, along with two cybernetic bodies.

The scientists set up a base camp and thaw out the aliens, not realizing that they are Borg. One of the drones comes to life and soon the entire research team has been assimilated. They then 'Borgify' the *Arctic One* and fly off.

The crew of *Enterprise* NX-01 are called in to track down the missing ship and they eventually find it attacking

a Tarkalean freighter. The *Arctic One* is now heavily Borgified and armed, but it retreats when *Enterprise* fires at it.

Two Tarkaleans, who are in the early stages of assimilation, are rescued and brought to sickbay. Later, they attack Dr. Phlox and sabotage the warp plasma regulators before they are stopped by ejecting them out into space.

Enterprise locates the Borgified *Arctic One* again, but it transmits a signal that shuts down power on the Starfleet ship. Now totally at their mercy, Captain Archer and Lt. Reed are forced to beam over to the Borgified ship and blow it up from within if they are to have any chance of saving *Enterprise*.

COMING IN ISSUE 100

STARFLEET DAEDALUS CLASS



EVERY
TWO WEEKS
AT YOUR
RETAILER



Inside your magazine

- In-depth profile of the *Daedalus Class*, a 22nd-century Starfleet vessel, examples of which included the *U.S.S. Horizon NCC-176* that visited planet Sigma Iotia II in 2168
- How the *Daedalus Class* was based on an early *U.S.S. Enterprise* design by Matt Jefferies and how it was updated
- A look at the early *STAR TREK* history of space exploration and the formative days of the Federation

eaglemoss.com/shop

The place to order your STAR TREK ships

- Use the special **INTRODUCTORY DISCOUNT CODE** STAR10 to get **10% OFF** your first online order
- Sign up for the **NEWSLETTER** to be the first to hear about **EXCLUSIVE ONLINE OFFERS**
- All orders are delivered direct to your door. **ANY DAMAGES REPLACED - NO QUESTIONS ASKED!**



BINDERS

Order specially-designed binders to store your magazines. There are two designs to choose from.



BACK ISSUES

Complete your collection by ordering any missing issues, and sign up to the newsletter to be the first to know when rare items come back into stock.



eaglemoss.com/shop

STAR TREK™

